

LISY

MANUAL



Table of contents

INTRODUCTION	5
INSTALLATION	6
LISY DISPLAY	6
DISPLAY FEATURES	7
SOME SAMPLES OF LISY-DISPLAY	9
CONFIGURATIONS	10
<i>Shortcuts</i>	10
<i>Main Drop-Down Menu</i>	10
<i>Edit Mode</i>	10
<i>Display Mode</i>	14
<i>Properties</i>	14
<i>Main Menu</i>	14
General	15
Controllers	17
Templates	19
Elevator Data	20
Background	24
Logo	28
Arrows	29
Floors	30
Floors Info	33
Special Modes	35
Gong	38
Date-Time	39
COP	40
Floor Directory	46
Slideshow	48
Video	49
Web	51
Special Text	52
Background Music	55
Card Reader	56
Fingerprint	57
Camera	60
Monitoring	63
Languages	64
Backup – Restore	65
Info	67
Status	69
<i>Extras</i>	70
Current Height	70
Lift View	71
Cabin Load	72

Light Control	73
<i>Save as Template</i>	74
<i>Show 'TFT Display' limit border</i>	74
<i>Show desktop</i>	74
<i>Run the LiSA-PC Program</i>	74
<i>Exit Program</i>	74
LISY EMERGENCY & ATTENDANT SYSTEMS	75
<i>Main Menu</i>	75
Sound card	75
Positions	76
Connections.....	78
Service Centers.....	80
Emergency Call	84
Lift Attendant	85

PICTURE 1 - SAMPLES.....	9
PICTURE 2 – DROP-DOWN MENU	10
PICTURE 3 - COP-CONTAINER’S DROP DOWN MENU	11
PICTURE 4 - EDIT MODE	13
PICTURE 5 – CONFIRM	14
PICTURE 6 – MAIN MENU.....	14
PICTURE 7 – GENERAL MENU ITEM.....	15
PICTURE 8 – SOFT KEYBOARD	16
PICTURE 9 – CONTROLLERS MENU ITEM	17
PICTURE 10 – TEMPLATES MENU ITEM.....	19
PICTURE 11 – ELEVATOR DATA MENU ITEM (OPTIONS).....	20
PICTURE 12 – ELEVATOR DATA MENU ITEM (POSITIONS)	22
PICTURE 13 – SELECT FONT.....	23
PICTURE 14 – BACKGROUND MENU ITEM	24
PICTURE 15 – SELECT A VIDEO FILE.....	25
PICTURE 16 – SELECT A STREAM SENDER.....	25
PICTURE 17 – SELECT AN IMAGE FILE	26
PICTURE 18 - SELECT COLOR.....	27
PICTURE 19 – LOGO MENU ITEM	28
PICTURE 20 - ARROW MENU ITEM	29
PICTURE 21 - FLOORS MENU ITEM	30
PICTURE 22 - SELECT A SOUND FILE	31
PICTURE 23 - FLOOR-INFO MENU ITEM	33
PICTURE 24 - SPECIAL MODES MENU ITEM, SOUNDS	35
PICTURE 25 - SPECIAL MODES MENU ITEM, IMAGES.....	36
PICTURE 26 - GONG MENU ITEM.....	38
PICTURE 27 - DATE-TIME MENU ITEM	39
PICTURE 28 - COP MENU ITEM	40
PICTURE 29 - ENTER PASSWORD	42
PICTURE 30 - DEFINE PASSWORDS FOR COP-BUTTONS	43
PICTURE 31 – RELEASE CODES	44
PICTURE 32 - FLOOR DIRECTORY MENU ITEM.....	46
PICTURE 33 - A SAMPLE FOR FLOOR DIRECTORY	47
PICTURE 34 - SLIDESHOW MENU ITEM	48
PICTURE 35 - VIDEO MENU ITEM	49
PICTURE 36 - WEB MENU ITEM	51
PICTURE 37 - SPECIAL TEXT MENU ITEM.....	52
PICTURE 38 - SCHEDULE SPECIAL MESSAGES	53
PICTURE 39 - BACKGROUND MUSIC MENU ITEM.....	55
PICTURE 40 - CARD READER MENU ITEM.....	56
PICTURE 41 - FINGERPRINT MENU ITEM	57
PICTURE 42 - SELECT FLOORS	58
PICTURE 43 - FINGERPRINT ENROLLMENT.....	59
PICTURE 44 - CAMERA, LOCAL WEBCAM	60
PICTURE 45 - CAMERA, IP CAMERA, JPEG FORMAT	61

PICTURE 46 - CAMERA, IP CAMERA, MJPEG FORMAT	62
PICTURE 47 - MONITORING MENU ITEM	63
PICTURE 48 - LANGUAGES MENU ITEM	64
PICTURE 49 - BACKUP & RESTORE MENU ITEM.....	65
PICTURE 50 - INFO MENU ITEM	67
PICTURE 51 - ENTER VALIDATION KEY	68
PICTURE 52 - STATUS MENU ITEM.....	69
PICTURE 53 - CURRENT HEIGHT	70
PICTURE 54 - LIFT VIEW.....	71
PICTURE 55 – CABIN LOAD.....	72
PICTURE 56 - SAVE AS TEMPLATE.....	74
PICTURE 57 - SOUND CARDS MENU ITEM	75
PICTURE 58 - POSITIONS MENU ITEM.....	76
PICTURE 59 - CONNECTIONS MENU ITEM	78
PICTURE 60 - SERVICE CENTERS MENU ITEM	80
PICTURE 61 - SELECT SKYPE NAME FROM THE LIST	81
PICTURE 62 - SERVICE CENTER'S AVAILABLE TIMES	82
PICTURE 63 - ADVANCED SETTINGS.....	83
PICTURE 64 - EMERGENCY CALL MENU ITEM.....	84
PICTURE 65 - LIFT ATTENDANT MENU ITEM	86

Introduction

The company **Schneider Steuerungstechnik GmbH** designs since 1991 the controllers and the components for the elevators with the brand 'LiSA' and it is worldwide known company.

LiSA Information System (LISY) is a PC-Based program from the company **Schneider Steuerungstechnik GmbH** and it contains 3 main functions.

- Display
- Emergency System
- Attendant System

This system is written with High-Tech Programming language C# and Microsoft DotNet. Also the company has another Pc-Based program named 'LiSA-PC' for the following reasons:

- Service Center
- Monitoring
- Remote configuration for the LiSA-Controller.

With these new systems from our company the elevators always are from remote accessible and they reduce the travel expenses. They are able to work with old and new media using analog-Modems, Networks, GSM-Modems, Internet. The Internet connection can be via LAN, DSL, UMTS, and Using these Medias the programs are able to communicate together using Data, Voice and Video connections.

Installation

To install LISY program you should first install some other programs and tools also you must have a valid Activation Key.

- 1- Install Audio/Video Codec
in the folder Tools you can find "K-Lite_Codec_Pack_640_Full.exe".
 - a. Click on the "K-lite-codecpack-640-full.exe" to execute that
 - b. Press "Next"
 - c. Advanced Install , Next
 - d. Next, Next, Next, Next
 - e. Check "Enable Internal decoder for H.264 video", Next
 - f. Uncheck "Media player classic" and check "Windows media player", Next
 - g. "Select all video", "Select all audio", Next
 - h. "Select all", Next
 - i. Next
 - j. Install and wait
 - k. Finish
- 2- Install Adobe Flash Player. Open the <http://www.adobe.com> . Download and install the latest version of flash player.
- 3- Install .Net Framework 3.5
in windows 7 or later probably you don't need to install .Net Framework because it is normally installed on your computer.
For the Windows XP, run the "dotnetfx35.exe" from the Tools Folder and follow the installation windows.
- 4- Check for windows media player. The LISY needs Windows Media Player 10 or higher. To install Windows Media Player 11 run the "wmp11-windowsxp-x86-DE-DE.exe" form the Tools folder and follow the installation dialogs.
- 5- Install LISY.
 - a. Right click on the "Setup.exe" from the menu select "Run as Administrator".
 - b. Press "Next"
 - c. Select the installation folder and press "Next"
 - d. Press "Next"
 - e. Enter Activation Key on the box and press OK.
 - f. Press Finish

LISY Display

LISY-Display is a part of LISY and it shows the not only the elevator's status but also it is possible to configure with a lot of nice components for informing the user and/or for advertising.

It is possible to install that large variety of computers such as PCs, Laptops, Netbooks, Tablets, and.... We name LISY-Display base on size of monitor LISY7 (for 7" Display") – LISY24 (for 24" Display). It is no limitation for bigger displays.

The operating system of the computer can be MS Windows XP or MS Windows 7 or later.

The display can have Touch-Screen to use LISY-Display as a COP (Cabin Operation Panel) and it can have Loudspeaker to play background music, floor announcement, gong, and Also it can play videos from hard disk, Network or stream from Internet.

Display Features

The LISY-Display can show the following components:

- Using colors, pictures, videos or Webcam video as background.
- Company's Logo.
- Static or Animated arrows.
- Floors symbols with ability of change Font Type, Font Color, and...
- Target Floor
- Extra information for each floor as Text and/or Picture or show picture as background.
- Elevator's Operation Modes
- Date and Time in long or short format.
- Cabin Operation Panel (COP). To send request to the controller.
- Floors Directory to inform user about the events on the floors.
- Slideshow
- Video (As a part of display or as Background)
- Web (to show Web pages as a part of display)
- Special text with ability of scheduling to show Text, Picture, or RSS feeds.

The LISY-Display can also play sound files in format of mp3 or wav for the following reasons:

- Gongs (upward, downward, passing).
- Floor announcements.
- Elevator's Operation mode
- Door and Direction functions.
- Background music.

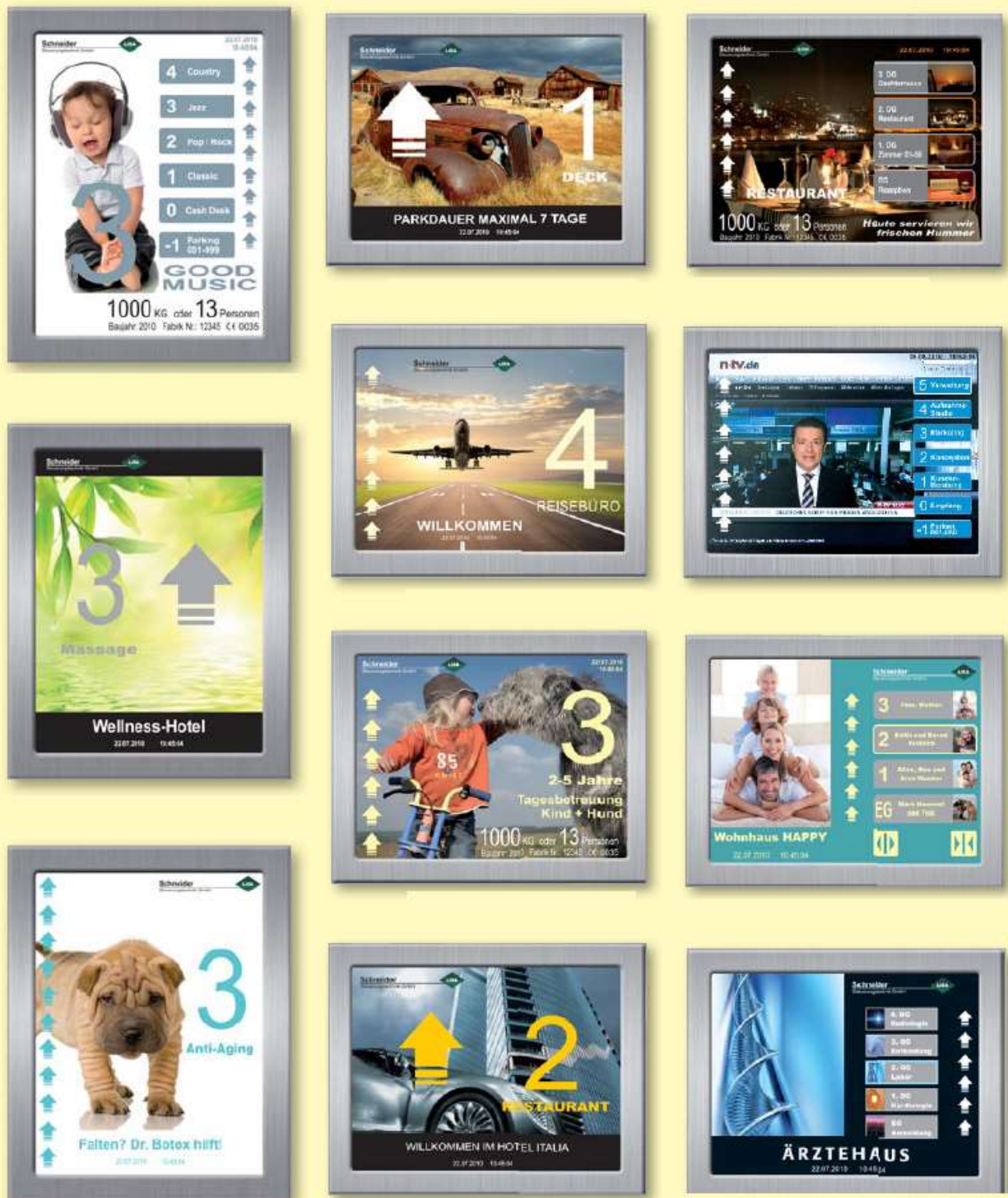
The LISY Display can be controlled with the following devices:

- Smart-Card Reader
- Fingerprint Scanner.

Other abilities:

- Change Language without restart.
- Make backup of configuration and restore that.
- Load predefined templates,
- Make own template and save that.
- Show the status of Internet, GSM-Signal Strength.
- Resize all the components using mouse in edit mode.
- Relocate all the components using drag-drop.
- Show vertical or horizontal.

Some samples of LISY-Display



Picture 1 - Samples

Configurations

Shortcuts

There are some shortcuts to do some functions simpler.

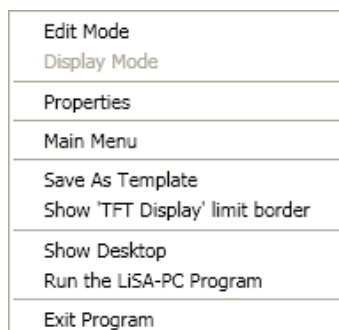
- **Alt+F4:** to close the opened window or LISY program.
- **Alt+F5:** to show the mouse pointer and enable right mouse click.
- **Alt+F6:** to hide the mouse pointer, on-screen keyboard and disable right mouse click.
- **Alt+F7:** to run "LiSA-PC" Program and Minimize the LISY-Desktop.
- **Alt+F8:** to show the Log-Viewer window.
- **Alt+F10:** to turn on / off the demo mode. After change the LISY will be restarted automatically.
- **Alt+N:** to open the main menu.

Main Drop-Down Menu

In this chapter we will see how can configure the display.

To avoid changing the configuration using Touch Screen by end users, the configuration mode is always locked. To unlock that you should have a keyboard and a mouse connected to the computer. If you press Alt+F5 the configuration will be unlocked and you will see the mouse pointer to lock it again you should press Alt+F6.

After unlock, Right click on the display and you will see a Drop-Down Menu like Picture 2.



Picture 2 – Drop-Down Menu

Edit Mode

If you click on this menu item, you are able to resize and relocate the LISY-Desktops elements using a Mouse and drag-drop. (See Picture 4)

In this mode, you can see a red border for each element.

To move an element, move the mouse pointer above of that and while pressing left mouse button, move the mouse. The selected element will move with the mouse also. If the mouse is not over any of the elements, the LISY-Desktop will move.

To resize an element, click and hold the left mouse button, inside the border near the right, bottom or right-bottom corner, while holding the left mouse button, move the mouse. The element will be resized. In this mode using the navigator buttons (No. 12 in Picture 4), you can see a preview of your current settings for floors, arrows, and ... also you can hear announcement for each floor.

For the COP, you can change the position and size not only for the container, but also for each button in the container. The container has a light pink background.

In this mode, it is possible to select more than one object and move them together. For this reason, use Ctrl + Mouse click to select / deselect the object. In selection mode the border color will change to dark green, then using the mouse, press and hold the left mouse button on the one of the selected objects and move the mouse. The selected objects will move together.

To deselect all objects, use Shift + Mouse click.

On the COP-Container also you can have multi-selection. In this case not only you can move the objects together, but also you have more options to change, resize and relocate the objects.

If you select more than one object in the COP-Container and Right-Mouse-Click, you will see a drop down menu. (See Picture 3)



Picture 3 - COP-Container's Drop Down Menu

On the following options, the reference object is that, the mouse was clicked on it.

- **Align Lefts:** aligns the lefts of all selected objects like the reference object.
- **Align Centers:** aligns the centers of all selected objects like the reference object.
- **Align Rights:** aligns the rights of all selected objects like the reference object.
- **Align Tops:** aligns the tops of all selected objects like the reference object.
- **Align Middles:** aligns the middles of all selected objects like the reference object.
- **Align bottoms:** aligns the bottoms of all selected objects like the reference object.
- **Make Same Width:** makes the widths of all selected objects like the reference object.
- **Make Same Height:** makes the heights of all selected objects like the reference object.

- **Make Same Size:** makes the sizes of all selected objects like the reference object.

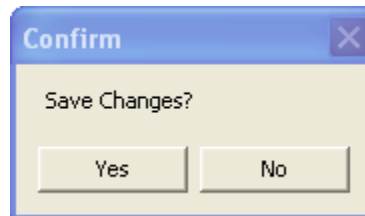


- 1- LISY Desktop
- 2- Date
- 3- Time
- 4- Logo
- 5- Floor Info
- 6- Op. Mode Image
- 7- OP. Mode Text
- 8- Floor Symbol
- 9- COP
- 10- Arrow
- 11- Status bar
- 12- Preview navigator

Picture 4 - Edit Mode

Display Mode

This menu item is enabled only in edit mode. By clicking on this item, the mode will change to the normal display mode. If you changed any element in edit mode, it will ask you that should save the changes or not. (See Picture 5)



Picture 5 – Confirm

By clicking on 'Yes', the System will save the changes but if you press 'No', the changes will be discarded and the LISY-Desktop will be refreshed with the old settings.

Properties

If the mouse pointer is above of any element and select this menu item, the property window of that element will be opened. You can also see the property window for each element in 'Main Menu'.

Main Menu

Click on main menu. The main menu will open. (See Picture 6)



Picture 6 – Main Menu

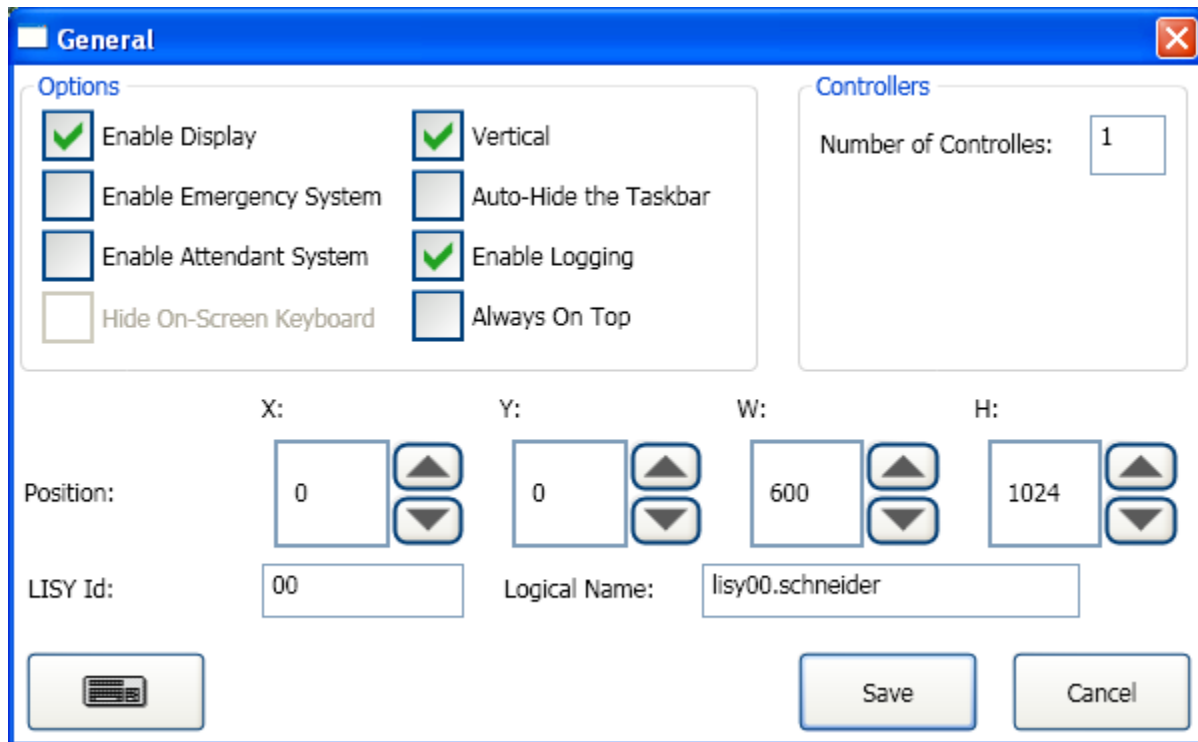
By double click on each menu item you will see a dialog and you are able to edit the settings.

General



In this window you can edit the system behavior.

See Picture 7.



Picture 7 – General Menu Item

As you see, LISY has three main functions and you must have a special key to activate these functions. (During install you should enter the activation key. You get this key from the Schneider Company.)

- **Enable Display:** to show or hide the “LISY-Display”
- **Enable Emergency System:** to activate/deactivate the emergency system (see LISY - Emergency system user manual.)
- **Enable Attendant System:** to activate/deactivate the attendant system (see LISY – Attendant System user manual.)
- **Hide On-Screen Keyboard:** there is an on-screen keyboard in Tablets with Windows 7 (or higher) operating system. With this option you can hide the keyboard to avoid changing the parameters by the users.
- **Vertical:** to rotate the display and show it vertically.
- **Auto-Hide the Taskbar:** if you check this checkbox, then LISY will hide the Windows Taskbar.
- **Enable Logging:** to enable / disable writing the system events, communications commands and system errors in a log file.

- **Always On Top:** LISY comes always on the top of all windows.
- **Number of Controllers:** it makes sense, when you have Emergency and/or Attendant system and you want to control more than one elevator's controller (Max. 8 controllers).
If you have more than one controller, LISY-Display shows only one controller's status and you can select which one should be active as Display in the 'Controllers' menu Item.
- **Position:** to change Position, Width and Height of Display-Desktop window.
- **LISY Id:** a digital code to identify the system. (In each group this id must be unique).
- **Logical Name:** a name for the system. (it makes sense when use Emergency / Attendant System)

LISY System offers a soft-keyboard if you don't have a keyboard connected to the computer. By clicking on the 'keyboard button' in whole system you will see a soft-keyboard (See Picture 8). To hide that click on button again.



Picture 8 – Soft Keyboard

- **Save Button:** To save changes and close the window.
- **Cancel Button:** To discard the changes and close the window.

Controllers



To edit Controllers settings.

See Picture 9.

The screenshot shows the 'Controllers' window with the following settings for 'Controller 1':

- Enable Absolut Encoder
- Use encoder's data to show current floor & direction
- Use LiSA Status Block
- Use for "Display Data"
- Use Handshaking for Serial Port
- Use Small Status Block

Connection Type: **Connected to the LUSB adapter (E1)**

Port: **COM11**

2. Port (E1): **COM10**

Controller:

- LiSA Controller
- Foreign Controller

Display Position:

- Cabin
- Floor

Floor: **Unknown**

Id: **000000**

Index: **0**

Buttons: **Scan for Serial Ports**, **Save**, **Cancel**

Picture 9 – Controllers Menu Item

If you have more than one controller, you will see a list of them. You can edit the behavior of each controller by clicking on the list.

- **Enable Absolute Encoder:** to use an 'Absolute encoder device' for the positioning.
- **Use LiSA Status Block:** if the LISY is connected to the LiSA controller, it is able to read the status block of LiSA-Controller and use that as source for LISY system.

- **Use for “Display Data”:** if you have more than one controller, you can select which of them is sending data to the display. If you have only one controller it makes no sense and it is always checked.
- **Connection Type:** you must select from the list how LISY system is connected with the controller. You have the following possibilities:
 - **No connection:** you have no controller and you want to use the display as demo or for advertising with video, Web ...
 - **Directly connected to the lift-controller:** it is connected via serial cable directly to the controller or uses “LiSA Bus Adapter Cabin Type”.
 - **Connected to the LiSA Bus Adapter:** if it is connected to the “LiSA Bus Adapter Landing Type”
 - **Connected to the LUSB Adapter (E1):** if you have LiSA-USB PC-Interface (LUSB)
 - **TCP/IP:** the LISY system is connected to the Controller using LAN cable and Ethernet.

If you have more than one controller, you cannot change this option and you must use LUSB.

- **Port:** you must select the communication port from the list. (In case of using the 2nd, 3rd or 4th option for connection type).if select 5th option, instead of port you will see the **IP:** and you must enter the IP address of LiSA-Server.
- **Signal Port:** you must select the port from the list for the Signals if you have selected 4th option of connection type.
- **LiSA Controller:** Select this option if LISY is connected to the LiSA Controller.
- **Foreign Controller:** LISY is able to work with the foreign controller. In this case you need to have an interface board (FE2SER) for signals from controller. In this case you should select ‘Foreign Controller’.
- **Display Position-Cabin:** Select this option if the LISY is installed in the Lift’s Cabin.
- **Display Position-Floor:** Select this option if LISY is installed as ‘Landing Display’. In this case you must select the floor which LISY there is installed. This option is useful for playing ‘Landing gong’ when the cabin arrived at the floor.
- **Id:** is a 6-Digit identification number. It can be same as LiSA Id. It makes sense if you have Emergency and/or Attendant system. LISY will send the packets to the service center with this id.
- **Index:** it is a numerical index of LISY in a group of LISYs. In case of using TCP/IP as connection type it will be identification number of receiving packets.
- **Save Button:** To save changes and close the window.
- **Cancel Button:** To discard the changes and close the window.

Templates



To select a predefined template for LISY-Display.

See Picture 10.



Picture 10 – Templates Menu Item

For LISY Display it is possible to use predefined templates. In this window you can select one of them. After selection you will see a preview of template.

Adapt automatically to the display resolution: (not recommended) if you check this box, after press save button, LISY will change the templates' resolution to the Monitor resolution and relocate the components with the new resolution. In some cases the graphical view is not as nice as original template. In this case we recommend either you change the components locations in 'edit mode' (see Edit Mode) or make your own template (See "Save as Template")

Elevator Data



To edit the static data for the elevator such as capacity ...

See Picture 11.

Elevator's Data

Show Elevator's Data

Options | Positions

Capacity

Font: Kg
 Persons

Product Year

Font: Year:

Product Number

Font: P.No:

CE Number

Font: CE No.:

Fire Hint

Font: Text:

Picture 11 – Elevator Data Menu Item (Options)

- **Show Elevator's Data:** to show or hide the static data.
- **Capacity:** To edit capacity of elevator's cabin in 'Kg' and 'Persons'
 - **Font:** to change Font type, Font size, Font style and color of text. Double click in textbox area. It will open a window to change Font properties. (See Picture 13)
 - **Kg:** in this textbox put the capacity in kilogram. (e.g. 630)
 - **Persons:** in this box put the capacity in persons. (e.g. 8)
- **Product Year:** To edit year of elevator's production.
 - **Font:** double click in the box to open Font window for editing Font type, size, style and color. (See Picture 13)
 - **Year:** in this box you can put 4-digit numeric value for the year. If you put nothing in this box, LISY will not show the label of 'production Year' on the LISY-Desktop.
- **Product Number:** To edit project code.
 - **Font:** Double click in the box to open Font window for editing Font type, size, style and color. (See Picture 13)
 - **P.No:** In this box you can put the alphanumeric code of project. If you put nothing, LISY will hide the correspondent label from the LISY-Desktop.
- **CE No:** To edit the CE number.
 - **Font:** Double click in the box to open Font window for editing Font type, size, style and color. (See Picture 13)
 - **CE No:** A numeric code for the CE-Sign in EU. LISY will show CE-Sign on the LISY-Desktop only when this box is not empty.
- **Fire Hint:** To edit hint text for user that they shouldn't use the elevator in case of fire.
 - **Font:** double click in the box to open Font window for editing Font type, size, style and color. (See Picture 13)
 - **Text:** This text will show on the LISY-Desktop in case of fire.
- **Labels:** To edit the labels of some components such as capacity ('kg' and 'Persons') and...
By default LISY fills these labels with the 'Kg', 'Persons', 'P.Year:' and 'P.No:.' respectively. But the user can change them. What you write there, you will see on the 'LISY-Desktop'.

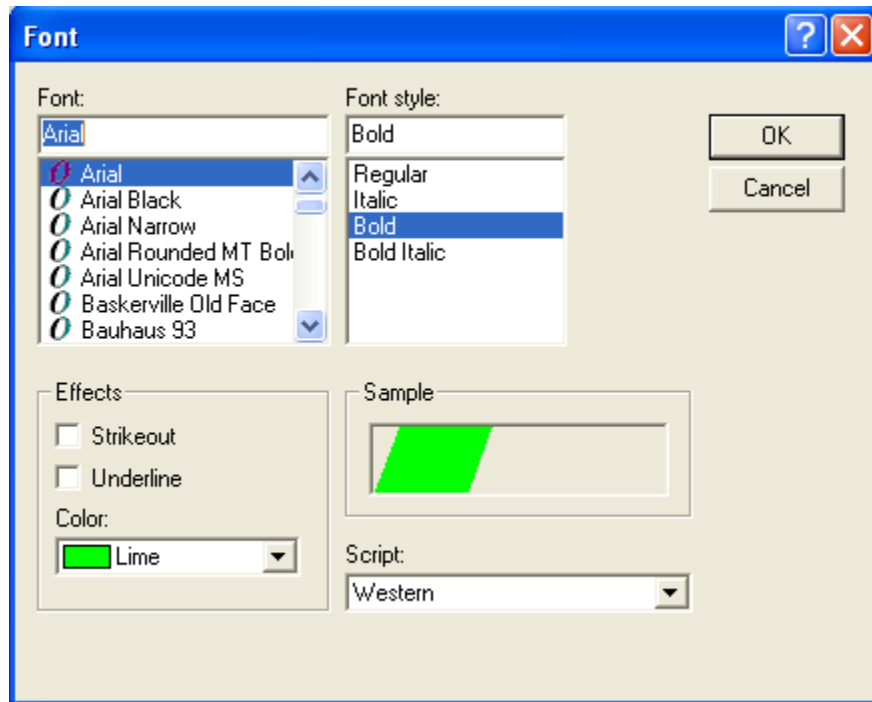
You are able to change the size and location of each element in the 'Position' tab. (See Picture 12)

Also it is possible to change the size and location of each item in edit mode. (See Edit Mode)

	X:	Y:	W:	H:
Capacity:	0	420	135	60
Kg:	135	420	40	60
No. Pers.:	175	420	65	60
Pers. Label:	240	420	80	60
CE Sign:	320	420	55	60
CE No.:	375	420	80	60
P.No.:	460	420	180	30
P.Year:	460	450	180	30
Fire Text:	0	0	50	50

Picture 12 – Elevator Data Menu Item (Positions)

In whole LISY configuration windows, if you double click on the Font's boxes you will see a window to edit Font type, size, style and color. (See Picture 13)



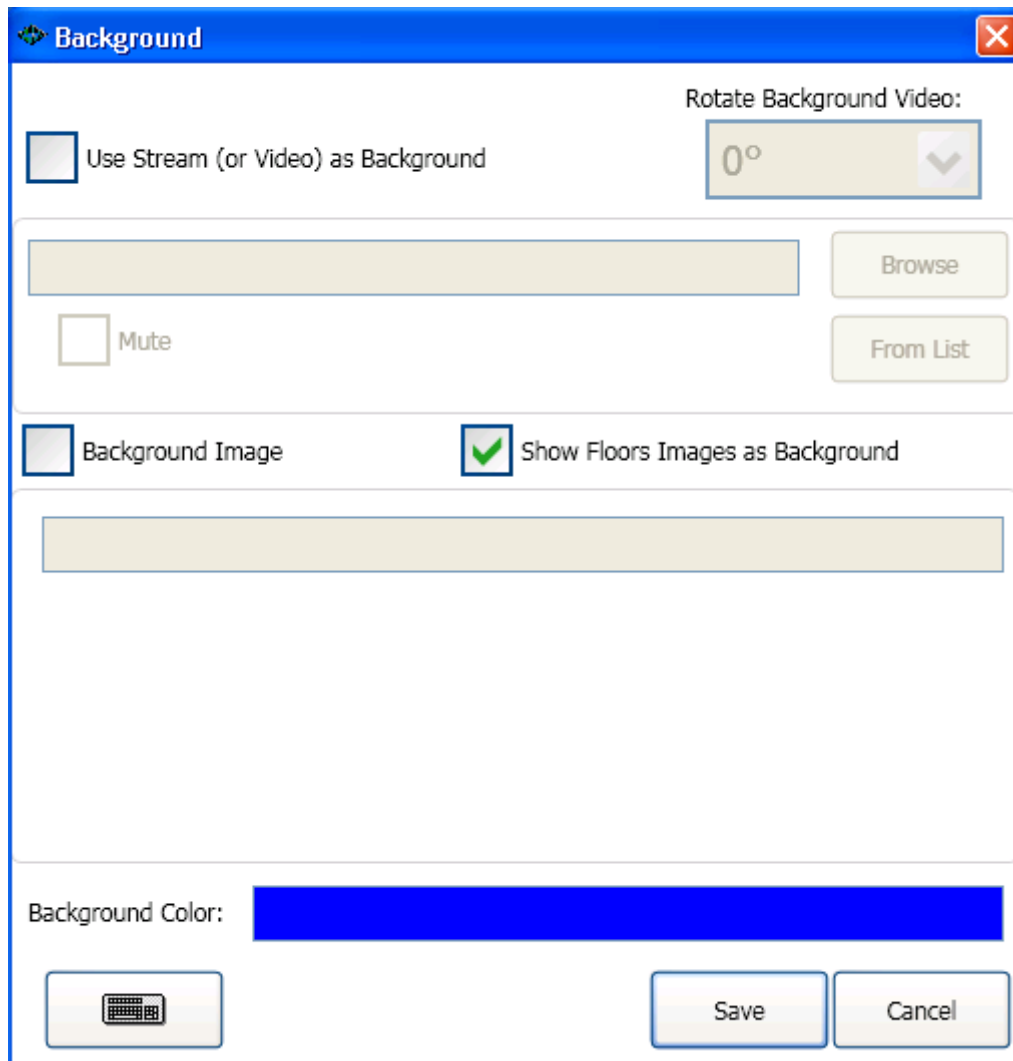
Picture 13 – Select Font

Background



To edit the background of LISY-Desktop.

See Picture 14

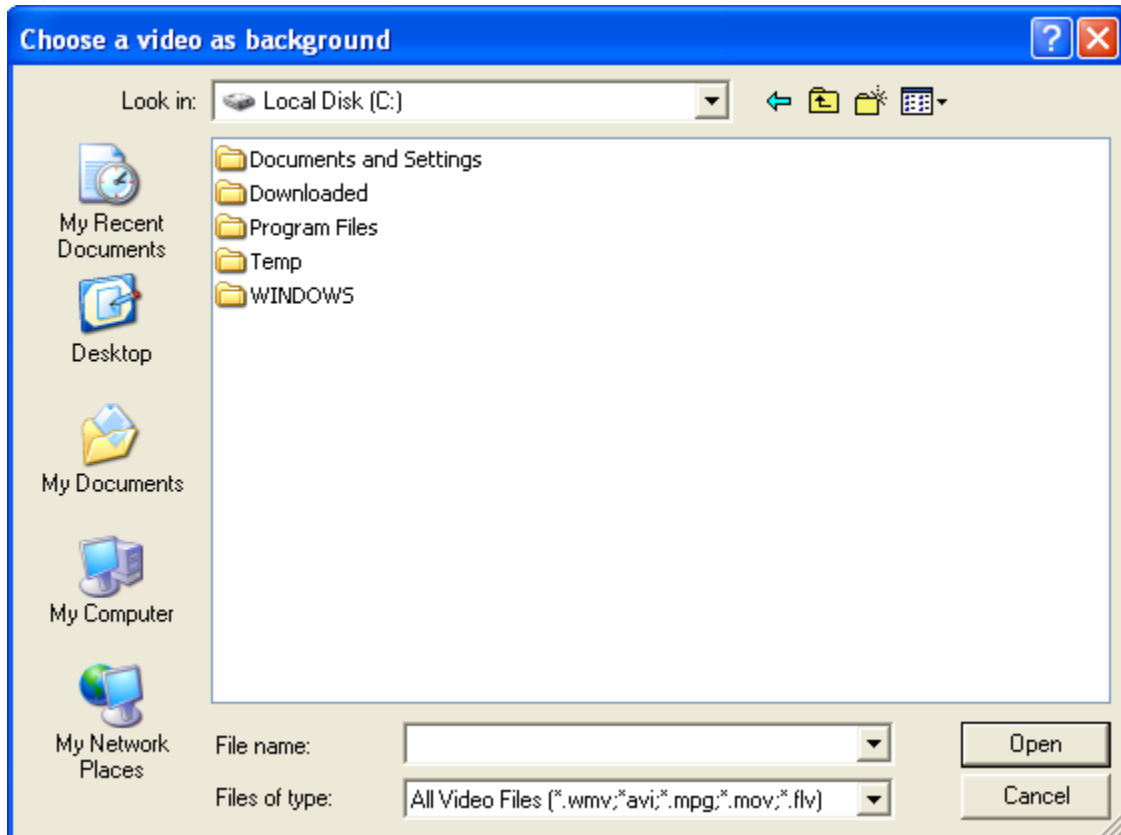


Picture 14 – Background Menu Item

In this window you are able to edit the background. LISY supports colors, pictures and videos as background.

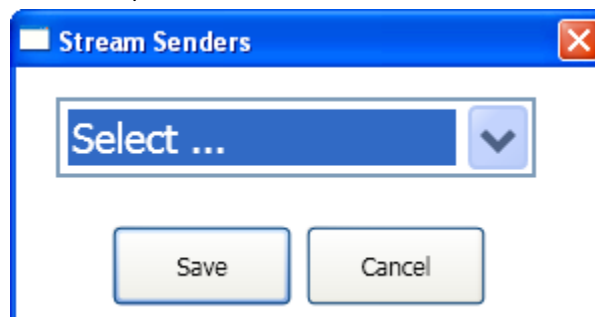
- **Use Stream (or Video) as background:** You can select a video file from local storage, Network storage or Internet stream and play that as background.
- **Rotate Background Video:** if you use Webcam or video as background, you are able to change the orientation of video by selecting a degree value from the list.

- **Address textbox:** you can enter the stream sender's URL or Video path in this box.
- **Browse:** if you check stream (or video) as background, you are able to select a video file. By clicking on browse, it will open a window to select the file. (See Picture 15)



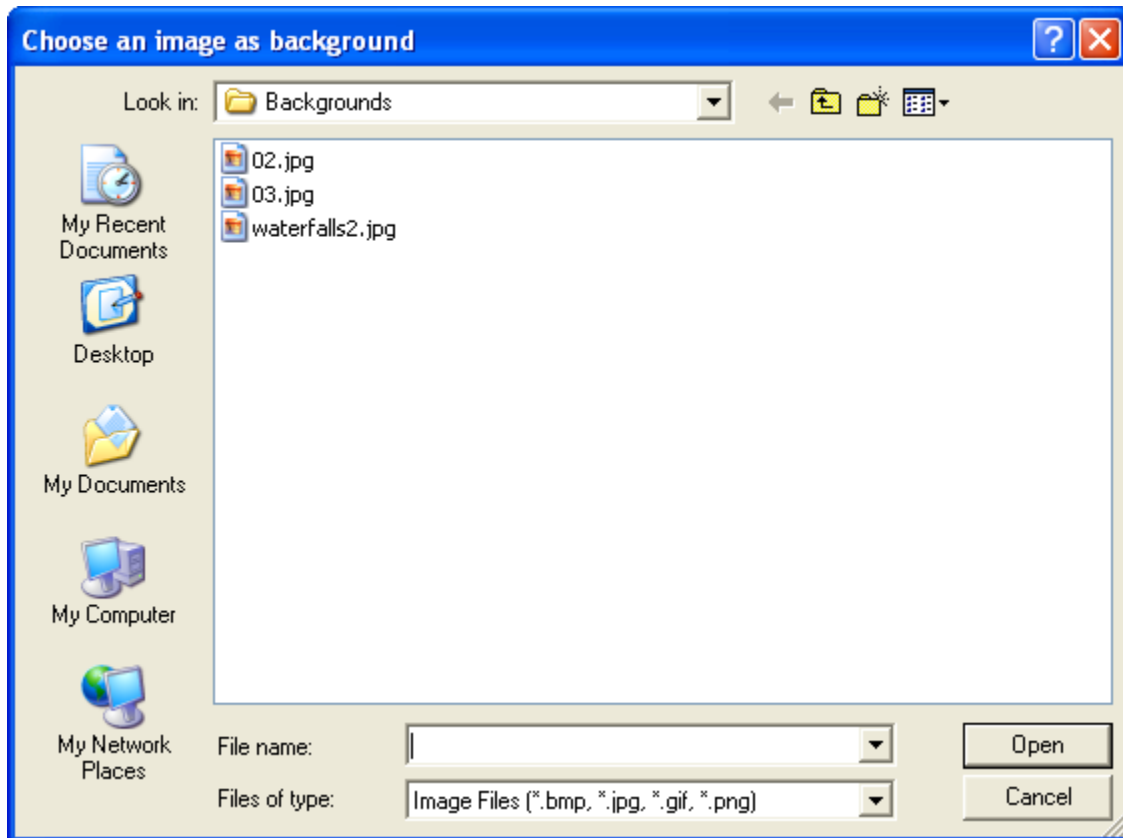
Picture 15 – Select a video file

- **Mute:** if your video contains sound, you can mute that by checking the box.
- **From List:** you can select a video stream sender from predefined list. (The sender must send windows media player compatible stream). By clicking on this button a window will appear to select the sender. (See Picture 16)



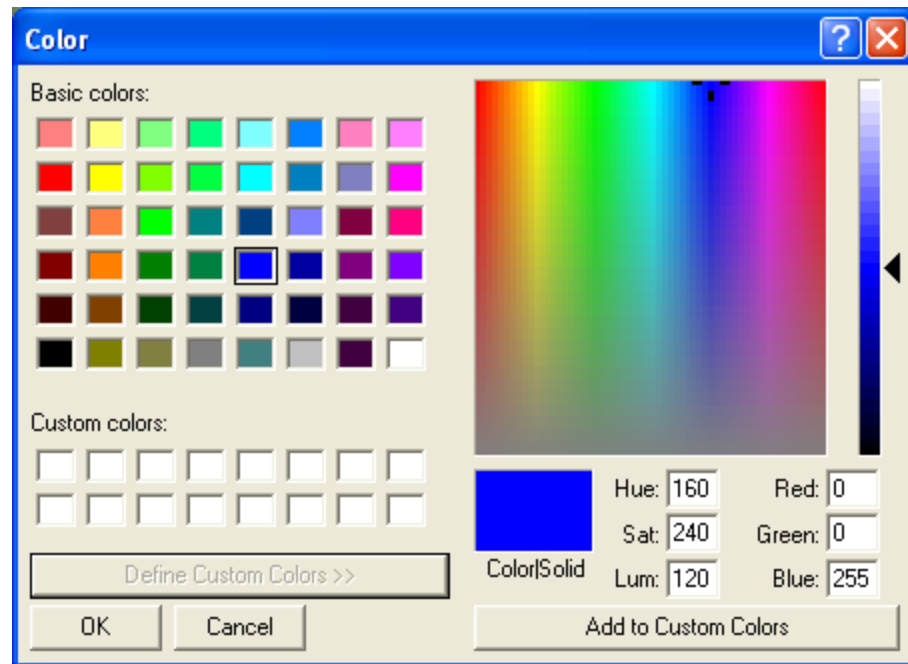
Picture 16 – Select a stream sender

- **Background Image:** it is possible to show an Image as background. If you choose this option you must enter the image path. You can do it by double click on the Path box. It will open a window to select image from the Image source (See Picture 17), or you can navigate with the explorer to select your file from your own folder. LISY will copy the file automatically in the configuration folder.



Picture 17 – Select an image file

- **Show Floors Images as background:** it is possible to show for each floor a separate image. You can choose an Image for each floor (See) and LISY shows it when the elevator located at the floor.
- **Background Color:** if you don't select any above options for background, you can select a color for background by double clicking on the box. After double click on the box, a window will appear (See Picture 18) and you can select color from predefined colors or you can create your own custom color (by changing RGB values) and select it.



Picture 18 - Select Color

Logo



To enable/disable Logo

See Picture 19



Picture 19 – Logo Menu Item

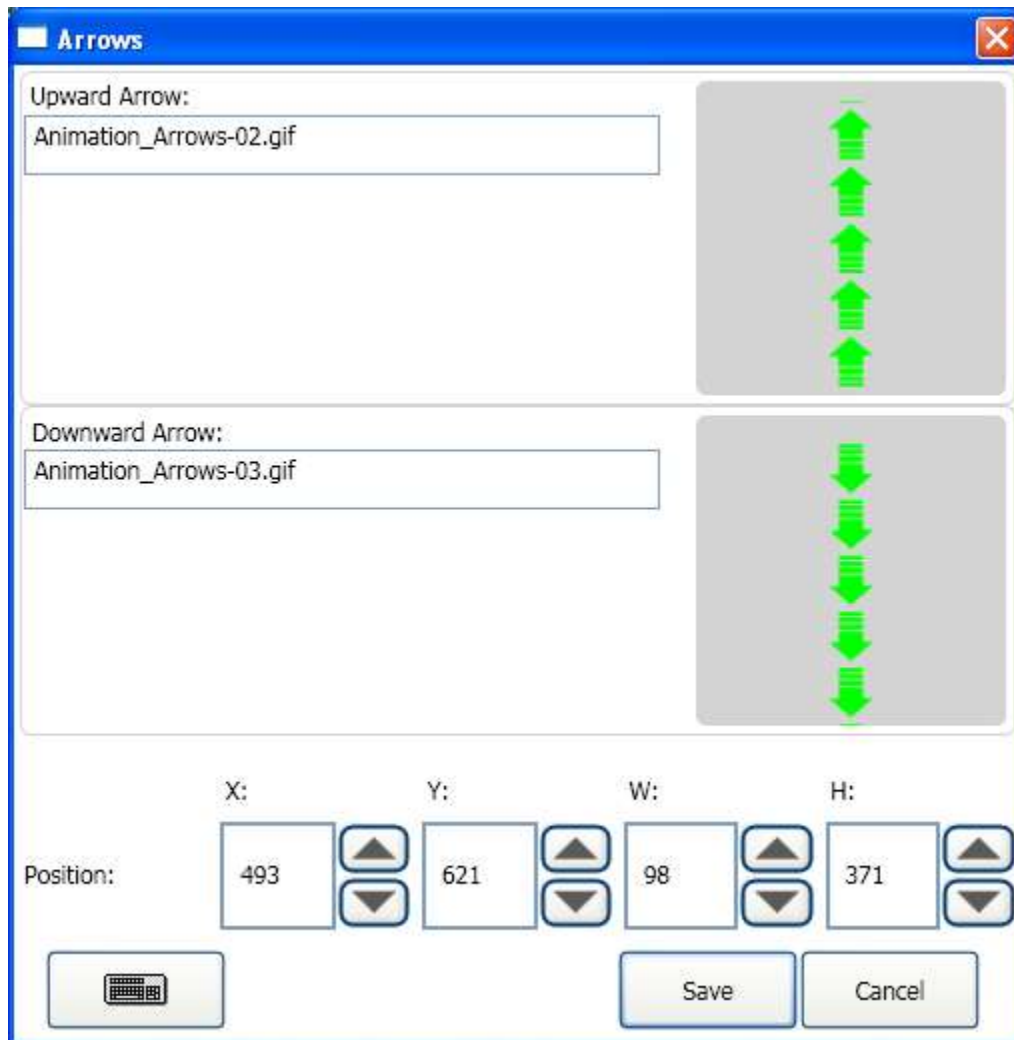
- **Use Logo:** check this box if you want to have logo on the LISY-Desktop. You can hide the logo by unchecking the box.
- **Logo Path:** if you checked box to use logo, you must select an image file for logo. You can double click on the path box to open 'Select Image' window. (See Picture 17).
You can see a preview in the window.
- **Position:** here you can change the position and size of logo. Also it is possible to use mouse and drag-drop in Edit Mode.

Arrows



To edit direction arrows.

See Picture 20



Picture 20 - Arrow Menu Item

You can select image files for each arrow direction. If you have an animated gif file, also you can use that to show animated arrows.

- **Path:** You can double click on the each path box to open 'Select Image' window. (See Picture 17).
You can see a preview in the window.
- **Position:** here you can change the position and size of logo. Also it is possible to use mouse and drag-drop in Edit Mode.

Floors



To edit floors properties.

See Picture 21

Floors

No. of Floors: Show Floor Symbols

Symbol Font:

Floor 1
Floor 2
Floor 3
Floor 4
Floor 5
Floor 6
Floor 7
Floor 8

Text:

Use Sound

Position: X: Y: W: H:

Target

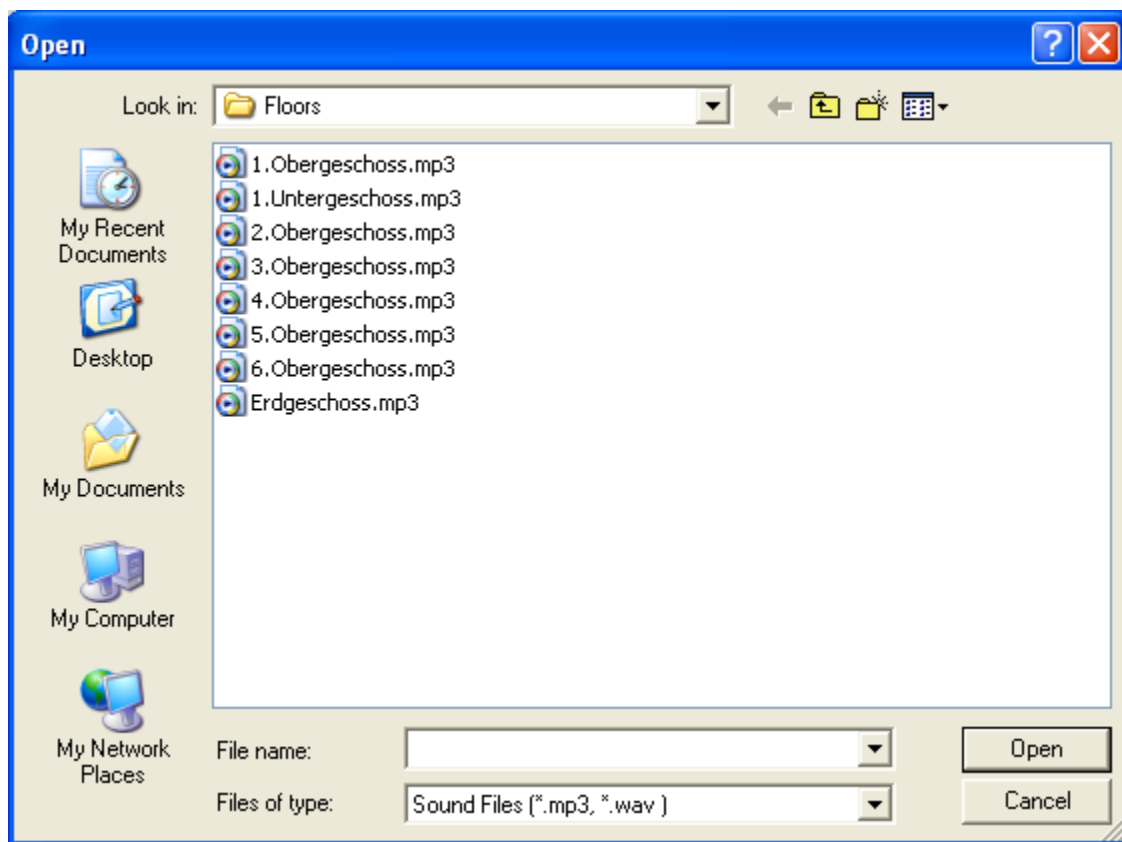
Show Target Floor Label:

Position: X: Y: W: H:

Picture 21 - Floors Menu Item

- **No. of Floors:** enter number of elevator's stops in the building.
- **Show Floor Symbol:** to show or hide 'floor symbol' on the LISY-Desktop.

- **Symbol Font:** you can select the name, size, style and color of Font to be used for floor symbol. Double click on the Font box area; it will open a Font window. (See Picture 13)
- **Floors List:** in this list you can select a floor to edit the properties of that. For each floor you can enter a text as symbol and choose a sound file as announcement.
- **Text:** an alphanumeric symbol with maximum 4 characters to show on the LISY-Desktop. You can see a preview of symbol below of textbox.
- **Use Sound:** for each floor separately you can select a sound file to play that when the elevator arrives at the level. If you uncheck the box, LISY doesn't play sound for the selected floor.
- **Sound File Path:** Double click on the box to open a window to select a sound file for the selected floor. (See Picture 22)
LISY will copy automatically the file to the configuration folder.



Picture 22 - Select a sound file

- **Position:** here you can change the position and size of symbol. Also it is possible to use mouse and drag-drop in Edit Mode.
- **Show Target Floor:** it is possible to show the next stop of elevator on the LISY-Desktop. If you check this box LISY will show the target. If you uncheck the box it will not show.
- **Label:** a label for the target. It will show with the target floor symbol.
For changing the name, size, style and color of Font for the target, double click on this box. It will

open window for editing the Font. (See Picture 13)

if you need to have more than one line for the label, simply press the 'Enter' button on the keyboard and type on the another row.

- **Position:** here you can change the position and size of target. Also it is possible to use mouse and drag-drop in Edit Mode.

Floors Info



To Change additional information about each floor.

See Picture 23

The 'Floors Info' dialog box is shown with the following settings:

- Text Font:** Arial, 40, Regular
- Text Alignment:** Center
- Floor List:** Floor 1 (selected), Floor 2, Floor 3, Floor 4, Floor 5, Floor 6, Floor 7, Floor 8
- Use Image:** (checked)
- Transparent Background:** (unchecked)
- Image Preview:** (empty box)
- Use Text:** (checked)
- Text Preview:** (empty box)
- Position:** X: 0, Y: 0, W: 0, H: 0
- Buttons:** Save, Cancel

Picture 23 - Floor-Info Menu Item

For each floor, it is possible to show an additional text or image.

- **Text Font:** for editing the text Font, double click on the box to open 'Font window' (See Picture 13)

- **Text Alignment:** To change the horizontal alignment of the text. The possibilities are 'left', 'center' or 'right'.
- **Floors List:** in this list you can select a floor to edit the properties of that. For each floor you can enter a text as symbol and choose an Image file.
- **Use Image:** To show or hide image for each floor. This image can be used as background picture. (See Background 'Menu Item')
- **Path:** You can double click on the path box to open 'Select Image' window. (See Picture 17). You can see a preview in the window.
- **Transparent Background:** if you check this box, LISY tries to remove the background of image. In this case for better result, the background must be a homogenous color, and then LISY removes it.
- **Use Text:** To show/hide text for the floor. If you check both 'Image' and 'Text', the Image has priority and system will show the Image. Unless use image as background picture. You can see a preview in the window.
- **Position:** here you can change the position and size of logo. Also it is possible to use mouse and drag-drop in Edit Mode.

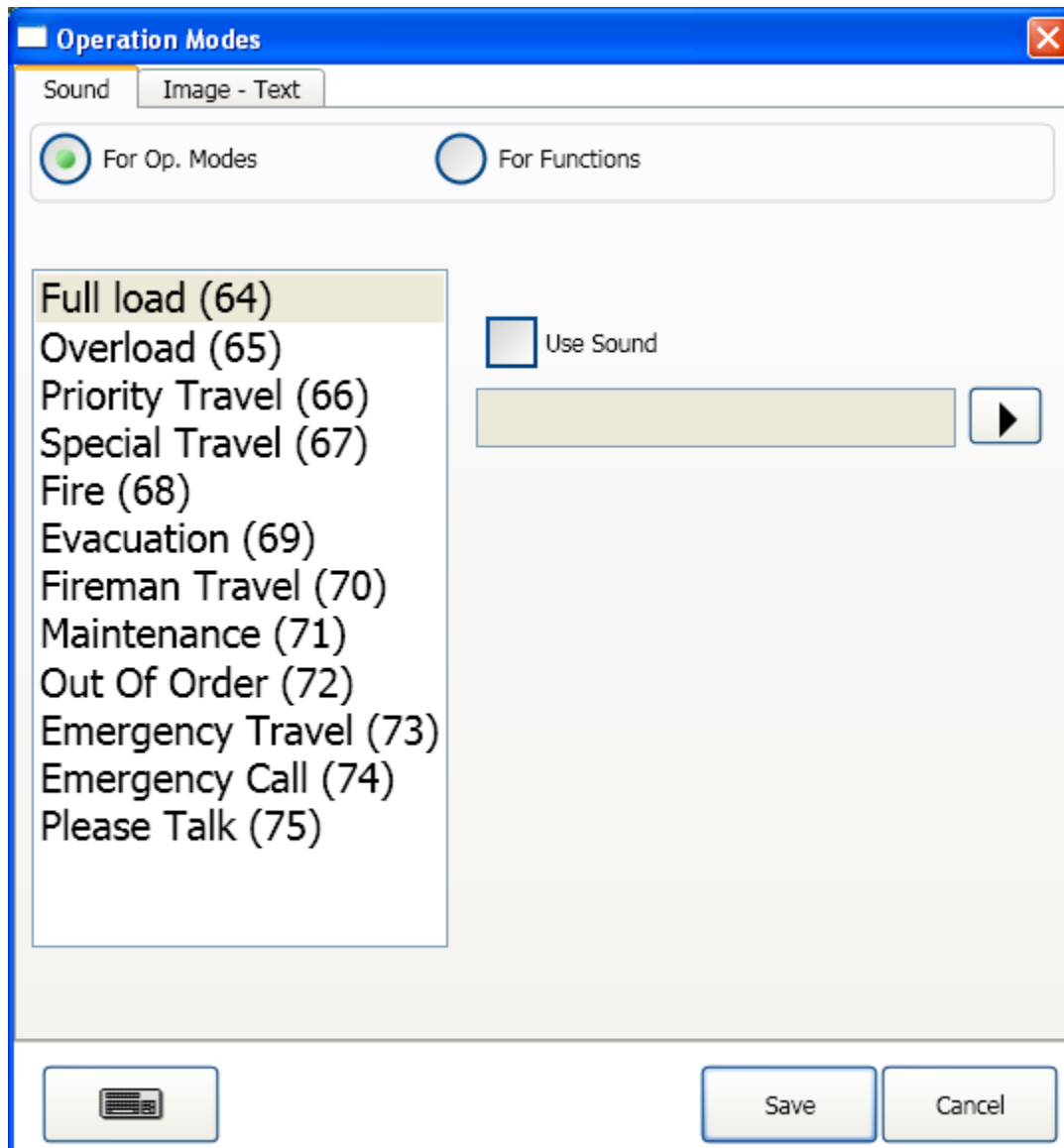
Special Modes



To edit properties of operation modes of controller.

This window contains two parts:

Assign a sound file to each operation mode (See Picture 24).



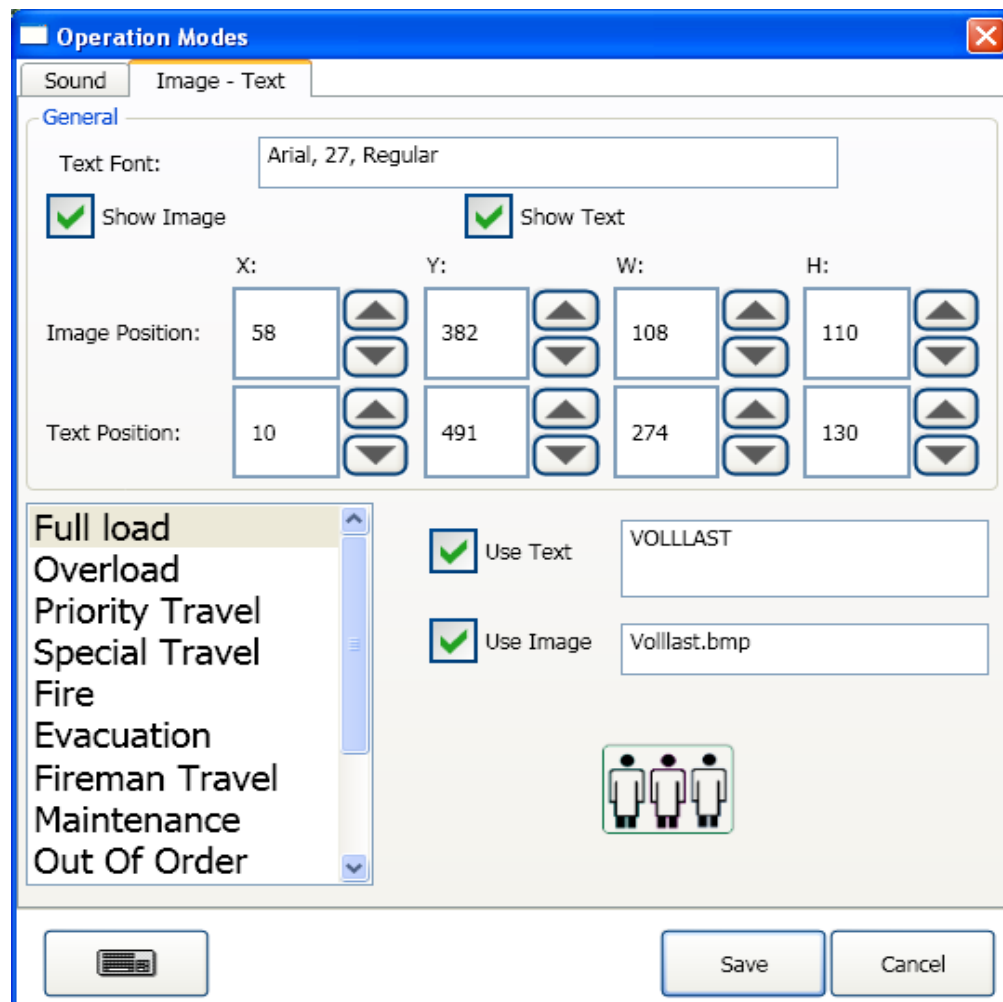
Picture 24 - Special Modes Menu Item, Sounds

If you use the LiSA controller, you have a list of operations and you can select a sound file for each operation or function mode. For the foreign controllers instead of the list with the specific names, you have 6 general purpose operations (S1...S6).

The number in parenthesis shows the code which LiSA will send in the specific operation mode.

- **'For Op. Modes' or 'For Functions':** To change view of the list for 'LiSA Operation Modes' or 'LiSA functions'. Some functions have no any visual effect on the display such as 'Door Opened', 'Door Closed', 'Upward drive' and
- **Use Sound:** Check the box if you want to assign a sound file to the operation mode.
- **Sound File Path:** Double click on the box to open a window to select a sound file for the selected floor. (See Picture 22)
LISY will copy automatically the file to the configuration folder.
- You can play the sound file by clicking on the 'Play' button.

Assign an image file and/or text to each operation mode (See Picture 25).



Picture 25 - Special Modes Menu Item, Images

In this page, you can change the Font, enable/disable Image and text and the position of text or image on the 'LISY Desktop'.

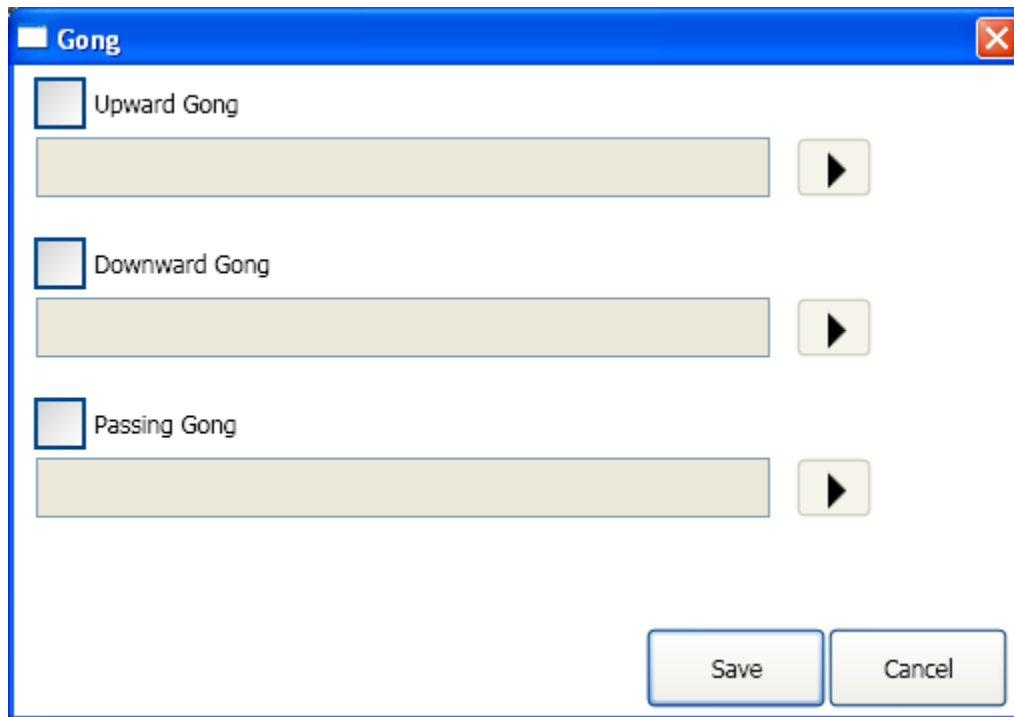
- **Text Font:** To edit the Font properties of the text. Double click on the box to open Font window. (See Picture 13)
- **Show Image:** To show/hide image container on the 'LISY-Desktop'.
- **Show Text:** To show/hide text container on the 'LISY-Desktop'.
- **Image or Text Position:** to change the size or location of the container on the 'LISY-Desktop'. Also it is possible to use mouse and drag-drop in Edit Mode.
- **Operation Modes List:** To select a specific mode for editing it's the text and/or image property.
- **Use Text:** To enable/disable text for the selected operation mode.
- **Use Image:** To enable/disable image for the selected operation mode.
- **Image Path:** You can double click on the path box to open 'Select Image' window. (See Picture 17). LISY will copy the file automatically in the configuration folder. You can see a preview in the window.

Gong



To assign sound file to the different gong types.

See Picture 26



Picture 26 - Gong menu Item

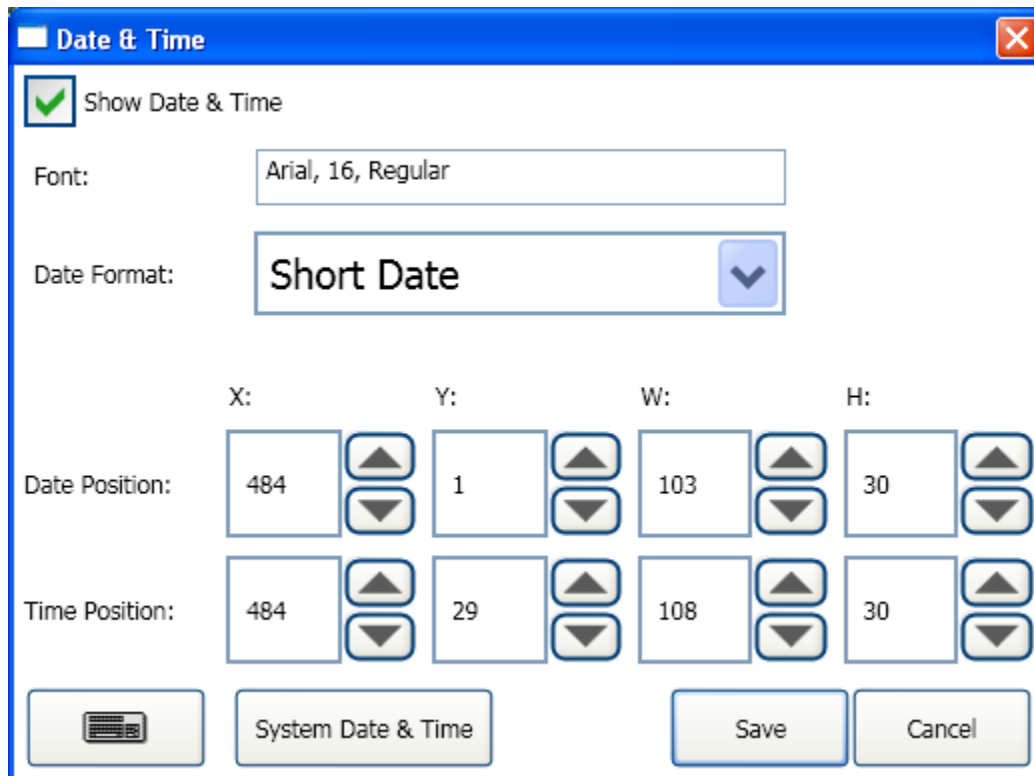
- **Upward Gong:** To enable/disable gong function in upward direction.
- **Downward Gong:** To enable/disable gong function in downward direction.
- **Passing Gong:** To enable/disable passing gong function.
- **Sound File Path:** Double click on the box to open a window to select a sound file for gong. (See Picture 22)
LISY will copy automatically the file to the configuration folder.
- **Play Button:** To play the sound file.

Date-Time



To edit Date and Time Properties.

See Picture 27



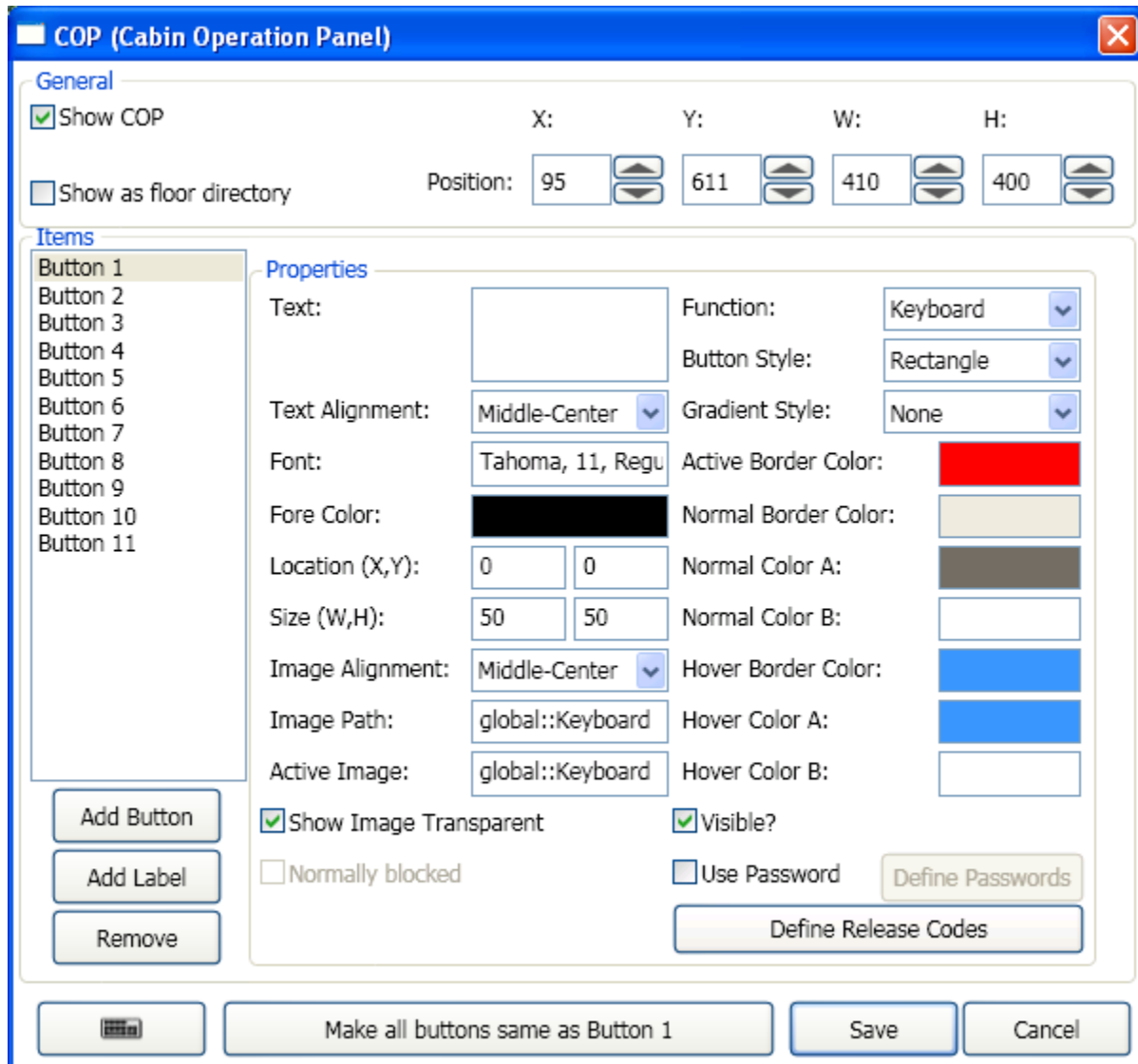
Picture 27 - Date-Time Menu Item

- **Show Date & Time:** To show/hide date and time on the 'LISY-Desktop'
- **Font:** To change the Font properties of date and time. Double click on the box to open Font window. (See Picture 13)
- **Date Format:** You can select between short and long date format, which will display on the 'LISY-Desktop'. The specific format for each type comes from computer's date and time settings. You can modify that in 'Control Panel -> Regional and language Options' and customize the date and time format.
(in MS Windows 7, 'Control Panel->Clock, Language, and Region->Change the date, time, or number format')
- **Positions:** To change the size and location of container on 'LISY-Desktop'. Also it is possible to use mouse and drag-drop in Edit Mode.
- **System Date & Time Button:** Opens 'system dialog' to set date and time.

COP

To edit properties of “Cabin Operation Panel” (COP)

See Picture 28



Picture 28 - COP Menu Item

- **Show COP:** To show/hide COP container on the ‘LISY-Desktop’.
- **Show as floor directory:** LISY will show the cop as ‘Floor directory’. In this case it is not possible to push the buttons.
- **Position:** To change the size and location of the COP container on the ‘LISY-Desktop’. Also it is possible to use mouse and drag-drop in Edit Mode.

You are able to insert button or label in COP container or remove the item from the container.

- **Add Button:** Inserts a button into the list.
- **Add Label:** Inserts a label into the list.
- **Remove:** Removes selected item from the list.

For each selected Item on the list (left), you will see its properties on the right. Depends to the type of item, some properties are enable and some are disable.

- **Text:** A text to show on the button/label.
- **Text Alignment:** alignment of the text horizontally and vertically in the item container.
- **Font:** To edit the Font properties of the text. Double click on the box to open Font window. (See Picture 13)
- **Fore Color:** To change the color of the text. Double click on the box to open color window. (See Picture 18)
- **Location:** To change the location of the selected item in the container. The X and Y values are relative values (in pixel) from left-top corner of the container. Also it is possible to use mouse and drag-drop in Edit Mode.
- **Size:** To change the size of the selected Item (in pixel). Also it is possible to use mouse and drag-drop in Edit Mode.

The following properties are enable only for the 'Button' type.

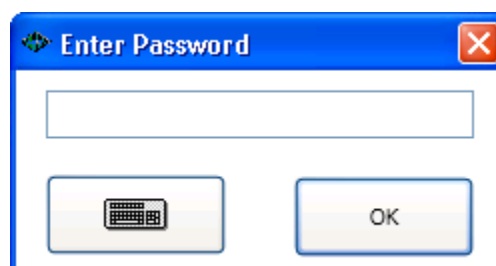
- **Image Alignment:** Horizontal and vertical alignment for the image in the selected button.
- **Image Path:** To select an image file for the button to show that in the normal operation mode. (See Picture 17)
- **Active Image:** To select an image file for the button to show that when it is active. Double click on the each image path box to open the selection window. (See Picture 17). LISY will copy the file automatically in the configuration folder.
- **Show Image Transparent:** LISY tries to remove the background color of the image. In this case background color must be homogenous.
- **Normally blocked:** This property is active only for the floors buttons. (If you change the function of the button to one of the floors). If check this box then the LISY will show a disabled button on the 'LISY-Desktop'. It can be activated using 'card reader', 'Fingerprint scanner' or a command from the controller.
- **Function:** To select the function of the button. (If press what should happen). There are some predefined functions such as 'Door-Open', 'Door-Close', 'Alarm', 'Cabin Call', and.... You should select a function for the selected button using this drop-down list.
- **Button Style:** There are two styles; Rectangle and Ellipse. With those you can change the shape of button.

Tip: For non-geometrical shapes, you can design your button shape in a graphic editor program (like Adobe Photoshop) for normal and active mode, and select the images in 'Image Path' and 'Active Image' and change the 'Gradient Style' of the selected button to the 'Transparent'.

- **Gradient Style:** To select style of gradient colors on the selected buttons. There are four different effects and you should choose your desire colors to get the best result in your own taste. For the gradient effect, normally you need two different colors, we named those 'Color A' and 'Color B'.
If you select 'None' as 'Gradient Style', then only 'Color A' will be used.
In case of using 'Transparent' as 'Gradient Style', the colors will be disabled.
- **Active Border Color:** The color of border, when the button is active.
- **Normal Border Color:** The color of border, in normal mode (not active) and the mouse pointer is **not** above of the button.
- **Normal Color A:** Gradient 'Color A', when the mouse pointer **is not** above of the button.
- **Normal Color B:** Gradient 'Color B', when the mouse pointer **is not** above of the button.
- **Hover Border Color:** The color of border, in normal mode (not active) and the mouse pointer **is** above of the button.
- **Hover Color A:** Gradient 'Color A', when the mouse pointer **is** above of the button.
- **Hover Color B:** Gradient 'Color B', when the mouse pointer **is** above of the button.
- **Visible?** Is the button visible or not.

For all above color fields, you can double click on the box to open 'color selection' window. (See Picture 18)

- **Use Password:** To protect the button using password. If you check this box, you must define at least one numerical password for the selected button by clicking 'Define Passwords'.
In this case if user presses the protected button, a window will be appeared to get the password. (See Picture 29)

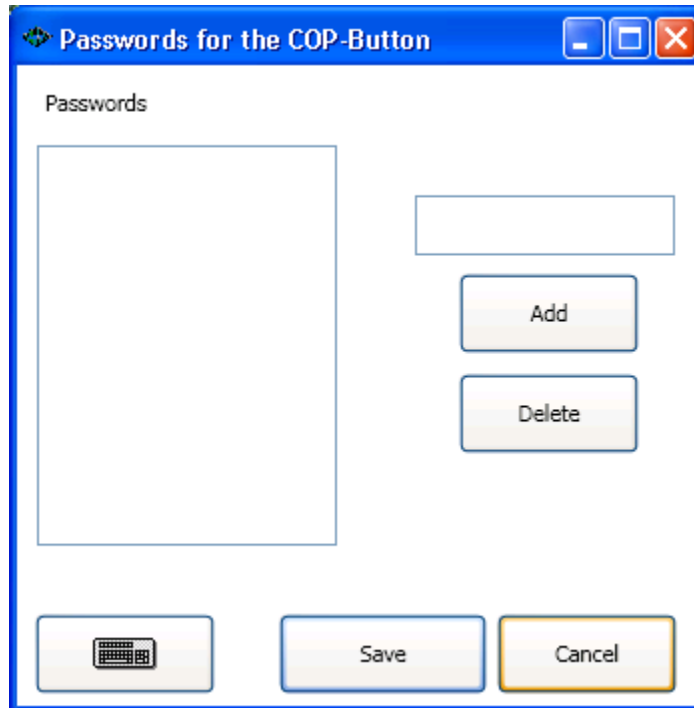


Picture 29 - Enter Password

- **Define Passwords:** To edit passwords for the selected button. (See Picture 30).

To edit passwords for a COP-Button, you must use this window.

- Enter a numerical password on the box (on the right) and press 'Add', to insert a new password for the button.
- Select a password and press 'Delete', to remove password from the list. After save, the deleted password is not valid any more.



Picture 30 - Define Passwords for COP-Buttons

- **Define Release Codes:** it is possible to block some or all buttons to avoid making call. To release the buttons it is possible to use “Fingerprint Scanner”, “Smart Card Reader” and also using on-screen keypad to enter password. By clicking on this button you can define the general codes to release the specific floor.(see Picture 31)

The screenshot shows a software dialog box titled "Release Codes". On the left, there is a list box containing the entry "User1". To the right of the list are several input fields: "Alias" with the value "User1", "Code" with the value "1234", "Function" with a dropdown menu showing "Release the floors", and "Options" with the value "5;6;". At the bottom of the dialog, there are four buttons: "Add", "Delete", "Save", and "Cancel".

Picture 31 – Release Codes

- **Alias:** it is only a name and could be anything.
- **Code:** the password to input that using keypad. It is a combination of digits.
- **Function:** for each Code, you can have a different function. You can select one of the functions in drop-down list. By default the function is ‘Unknown’ and LISY does nothing if detects a valid template. Another functions are:
 - **Greeting:** To show only a text message to the user.
 - **Release the floors:** To release the special floors for each code.
 - **Priority travel:** to enable ‘priority travel’ for each code.
- **Options:** In case of ‘Greeting’, you can enter the text. It will be shown on the ‘LISY-Desktop’. In case of ‘release the floors’ and ‘Priority Travel’, if you double click on the option box, it will open a window to select or edit the floors for the template. (See Picture 42). The only difference is, in case of ‘Priority Travel’ first a command to the LiSA-Controller to change the operation mode to the ‘Priority Travel’ mode, then enables the COP buttons on the ‘LISY-Desktop’ and sends ‘Call masks’ to the ‘LiSA-Controller’.
- **Add:** To insert new code,
- **Delete:** To remove the selected code.
- **Save:** to save and close the dialog.
- **Cancel:** to close the dialog without saving.

- **Make all Buttons/Labels same as Button/Label X:** You can define all the properties for one Button (Label) and by clicking on this button, make change to the entire components whit the same type. Some of the properties such as (Text, Location, Image, Function and Password) are not affected.
- **Save:** To save changes and close.
- **Cancel:** To discard changes and close.

Floor Directory



To change the properties of “Floor Directory”

See Picture 32

Floor Directory

General

Show Floor Directory

Position: X: 0 Y: 0 W: 50 H: 50

Properties

Floor 1	Text Font:	Arial, 18, Regular
Floor 2	Background Color:	Grey
Floor 3	Border Color:	Tan
Floor 4	Symbol Color:	Black
Floor 5	Active Border Color:	Red
Floor 6	Text:	
Floor 7	Text Alignment:	Middle-Center
Floor 8		

Keyboard | Make all same as floor 1 | Save | Cancel

Picture 32 - Floor Directory Menu Item

Floor directory is a component on the 'LISY-Desktop' to show additional information for all the floors at a glance. It shows always the location of the elevator's cabin using 'Active Border Color'.

The Floor directory is nearly same as COP, but you cannot add or remove the items and they come

automatically from the number of floors. Also you cannot assign a picture to the items and it will be automatically generated using the floors symbols. The size of the elements also will automatically adapt to the container.

- **Show Floor Directory:** To show/hide container on the 'LISY-Desktop'.
- **Positions:** To change the size and location of container on 'LISY-Desktop'.
Also it is possible to use mouse and drag-drop in Edit Mode.
- **Text Font:** To edit the Font properties of the text. Double click on the box to open Font window. (See Picture 13)
- **Background Color:** To change the background color of selected element. Double click on the box to open color window. (See Picture 18)
- **Border Color:** To change the border color of selected element in normal mode (the cabin is not at the correspondent floor). Double click on the box to open color window. (See Picture 18)
- **Symbol Color:** To create image from floor symbol using this color. Double click on the box to open color window. (See Picture 18)
- **Active Border Color:** To change the border color of selected element in active mode (the cabin is at the floor). Double click on the box to open color window. (See Picture 18)
- **Text:** A text for the selected floor. For example what is accessible in the floor?
(See sample Picture 33 - A sample for Floor directory)



Picture 33 - A sample for Floor directory

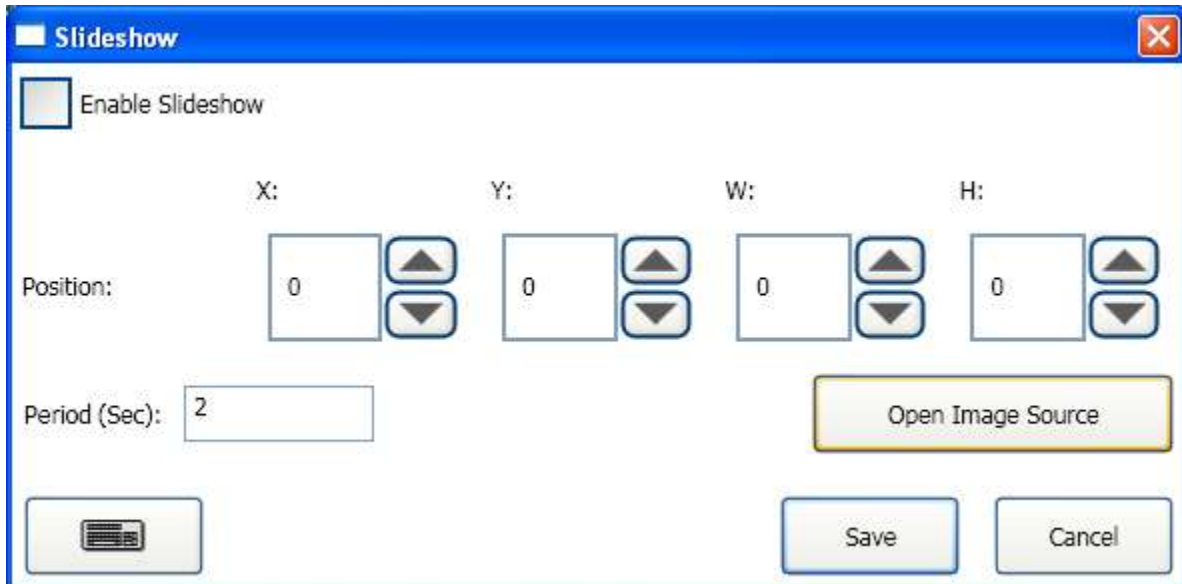
- **Text Alignment:** Horizontal and vertical alignment of the text in the item's container.
- **Make all, same as floor X:** with clicking on this button all the configuration for the selected item, will copy to the other items but not 'Text'.

Slideshow



To enable/disable slideshow as a part of LISY-Desktop.

See Picture 34



Picture 34 - Slideshow Menu Item

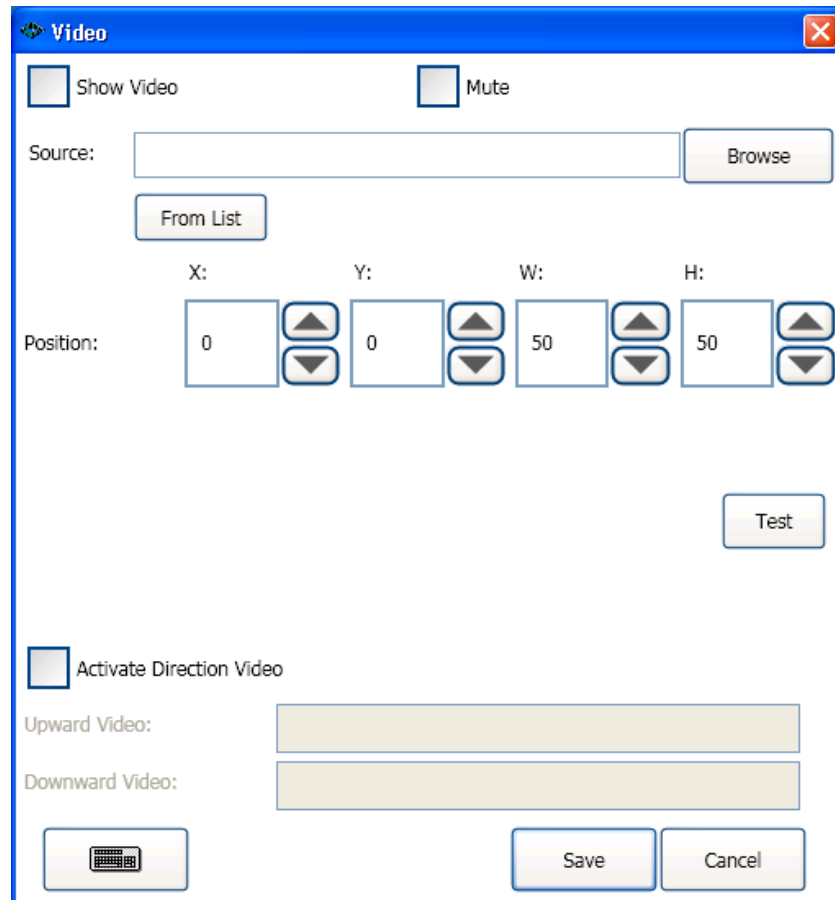
- **Enable Slideshow:** To enable/disable slideshow.
- **Positions:** To change the size and location of container on 'LISY-Desktop'. Also it is possible to use mouse and drag-drop in Edit Mode.
- **Period (Sec):** Amount of seconds for changing the picture.
- **Open Image Source:** Opens the source folder with the explorer. You must copy your pictures for slideshow in this folder.

Video



To show/hide video as a part as LISY-Desktop

See Picture 35



Picture 35 - Video Menu Item

- **Show Video:** To show/hide the video container on the 'LISY-Desktop'.
- **Mute:** If your video has sound, you can enable/disable its sound.
- **Source:** It is possible to play videos from the local storage, network storage or internet stream. You must enter the URL of the video stream sender in the source box. Also you are able to select video from storage.
- **Browse:** To select a video file. By clicking on browse, it will open a window to select the file. (See Picture 15)
- **From List:** you can select a video stream sender from predefined list. (The sender must send windows media player compatible stream). By clicking on this button a window will appear to select the sender. (See Picture 16)

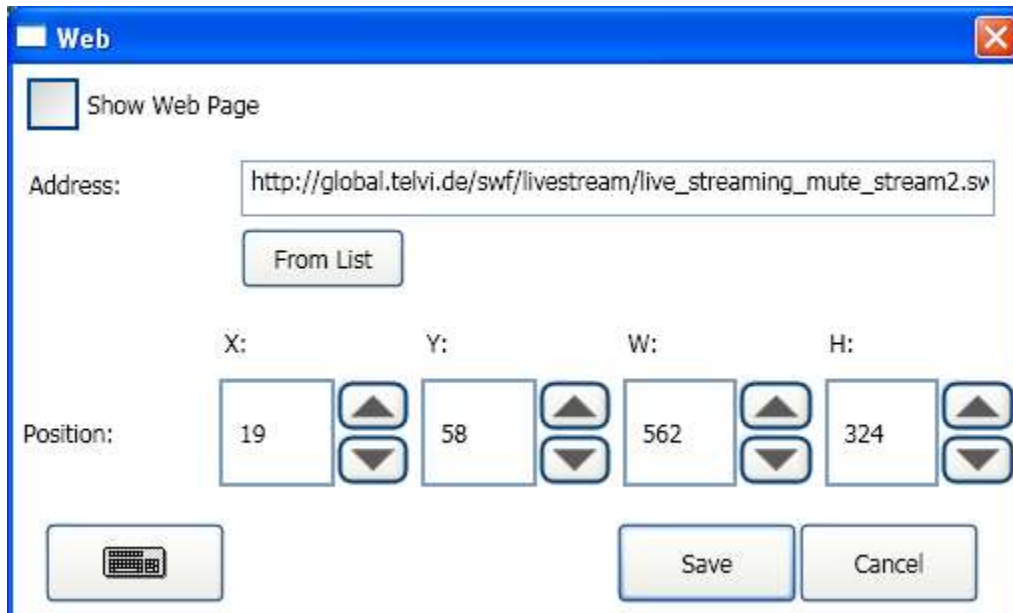
- **Positions:** To change the size and location of container on 'LISY-Desktop'. Also it is possible to use mouse and drag-drop in Edit Mode.
- **Test:** By clicking on the test button you will see a preview of the video which you have already selected.

Web



To show/hide a Web page as a part of LISY-Desktop.

See Picture 36



Picture 36 - Web Menu Item

You can use this component to show a Web page or Web part on the 'LISY-Desktop'. Also it is possible to play Flash videos. Some News senders have video streaming with Flash format. You need to have only the URL of the page (or part or Flash).

- **Show Web Page:** To show/hide the container on the 'LISY-Desktop'.
- **Address:** the URL address of Web page (or Web part, or Flash).
- **From List:** you can select from the predefined list. The list contains some addresses for the Flash stream senders. (See Picture 16).
- **Positions:** To change the size and location of container on 'LISY-Desktop'. Also it is possible to use mouse and drag-drop in Edit Mode.

Special Text



To edit, schedule, show or hide special texts, Images, RSS feeds.
See Picture 37

Picture 37 - Special Text Menu Item

To have additional item on the 'LISY-Desktop' for extra information, advertising, welcoming, and ..., you can use the 'Special Text' item. It is possible to have a static image, text or schedule messages (Text, Images) for a special date and time. Also it is possible to use 'RSS feed' news.

- **Show Special Messages:** To show/hide the container on the 'LISY-Desktop'.

- **Font:** To edit the Font properties of the text. This Font will be used for all Text-based messages in the 'Special Messages'. Double click on the box to open Font window. (See Picture 13)
- **Positions:** To change the size and location of container on 'LISY-Desktop'. Also it is possible to use mouse and drag-drop in Edit Mode.
- **Enable Scrolling Text:** If you use the Text-based message and you have a small area available on the 'LISY-Desktop' for the Messages-Container, you can check this box to enable scrolling text. In this case the text will scroll automatically from Right to Left, every X millisecond. You can define X in the 'Period' box.
- **Period:** amount of milliseconds for scrolling the text.

Now you have 4 options to choose what you want to show in the container.

- **Use Scheduled Messages:** if you choose this option, you must edit the Timetable for the messages. By clicking on the 'Edit Timetable', it will open a window. (See Picture 38)

Scheduled Messages

August, 2012

Mo	Tu	We	Th	Fr	Sa	Su
30	31	1	2	3	4	5
6	7	8	9	10	11	12
13	14	15	16	17	18	19
20	21	22	23	24	25	26
27	28	29	30	31	1	2
3	4	5	6	7	8	9

From: To:

Type:

Message (or Image Path):

Add Delete

From	To	Type	Message (or Image Path)

Save Cancel

Picture 38 - Schedule Special Messages

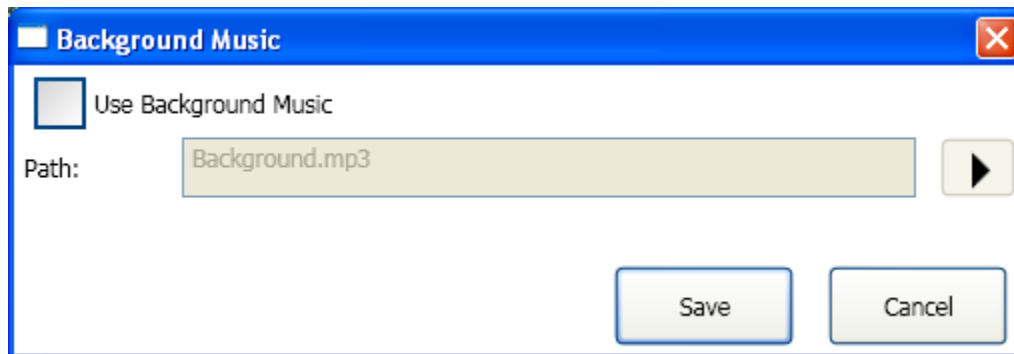
In this Window you have a calendar to select the day of scheduling text. Then for each day of year you can add lot of Time-Plans to show a text or an Image.

- **Calendar:** select your date, by clicking on the calendar. You can navigate in a calendar to another Month or Year. With one click on the 'Month, Year Indicator', the calendar view will change to the 'Month View'. Now if you click on the 'Year Indicator', the view will change to the 'Year View'. In this view you can select the year of scheduling, and in 'Month View' you can select the month of scheduling and after that the day.
- **From:** Start time in 'HH:mm' format. (e.g. 19:25)
- **To:** Stop time in 'HH:mm' format. (e.g. 21:30)
- **Type:** Choose the type of message (Text or Image).
- **Message (or Image Path):** Type your message in the box. (For Image type, double click on the box to open the window for selecting an image. See Picture 17).
- **Add:** Your message will be inserted in the table below.
- **Delete:** You are able to delete a row from the scheduling table. Click on the desired row in the table, then click delete to remove that.
- **Timetable:** By clicking on each row, you are able to modify the properties of the scheduled task. (e.g. Time, Type, Message)
- **Save:** To save the changes and close.
- **Cancel:** To discard the changes and close.
- **Use Image:** To show an image in the container. After select this option, you must select the image. Double click on the image path box to open the selection window. (SeePicture 17). LISY will copy the file automatically in the configuration folder.
- **Use Text:** To show a text in the container. After select this option, you must enter the text. You will see the text on the 'LISY-Desktop'.
- **RSS Feed:** RSS (Really Simple Syndication) is an XML-based format for sharing and distributing Web content, such as news headlines. You must enter the URL of the RSS feed. Then on the 'LISY-Desktop' you will see the headlines.
- **Save:** To save changes and close.
- **Cancel:** To discard changes and close.

Background Music



To change or delete background music sound file.
See Picture 39



Picture 39 - Background Music Menu Item

It is possible to play music in the cabin. This music will pause for the other sound announcements and will play automatically after those.

- **Use Background Music:** To enable using background music.
- **Path:** To select a sound file for the background music. Double click on the box to open a window to select a sound file. (See Picture 22)
LISY will copy automatically the file to the configuration folder.
- **Play Button:** To test the file and hear the music in configuration mode.
- **Save:** To save changes and close.
- **Cancel:** To discard changes and close.

Card Reader



To activate/deactivate smart card reader.
See Picture 40



Picture 40 - Card Reader Menu Item

To use smart card reader to allow user making call, change the operation modes (Priority Travel, Special Travel ...).

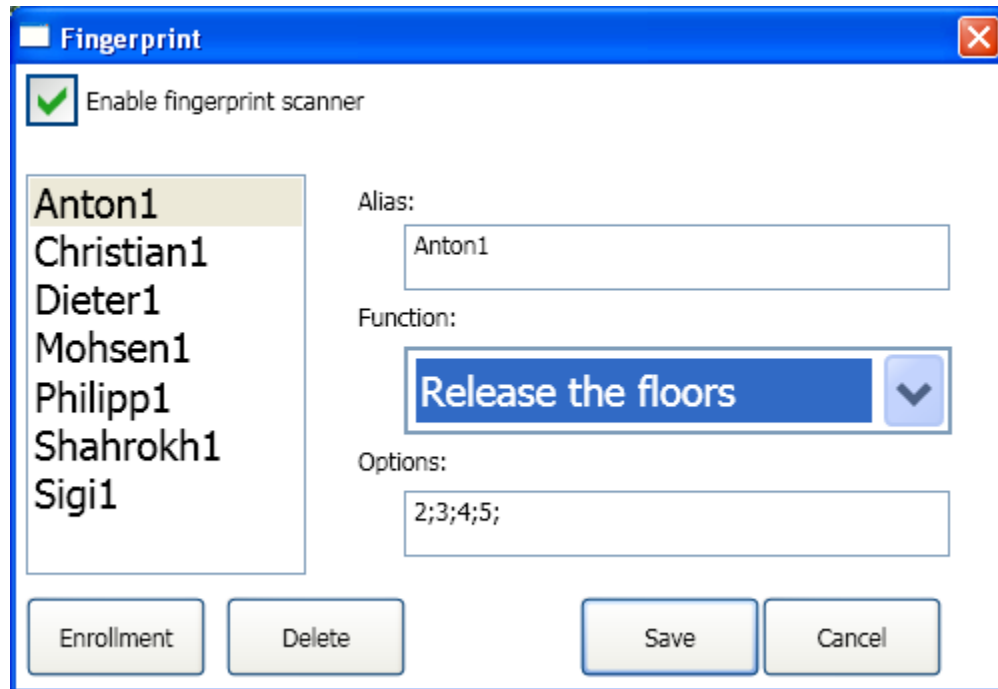
- **Enable:** Enable/Disable smart card reader.
- **Port:** To select a serial port for card reader.
- **Save:** To save changes and close.
- **Cancel:** To discard changes and close.

Fingerprint



To enable/disable fingerprint scanner.

See Picture 41



Picture 41 - Fingerprint Menu Item

It is possible to use a fingerprint scanner to activate some function.

- **Enable fingerprint scanner:** For enabling/disabling scanner.
- **List of Fingerprint templates:** For each person it is possible to save max. 10 templates (for each finger one template).
- **Alias:** For each template you can have an alias. It is a given name to templates and has no effect to the functionality.
- **Function:** for each fingerprint template, you can have a different function. You can select one of the functions in drop-down list. By default the function is 'Unknown' and LISY does nothing if detects a valid template. Another functions are:
 - **Greeting:** To show only a text message to the user.
 - **Release the floors:** To release the special floors for each fingerprint template.
 - **Priority travel:** to enable 'priority travel' for each template.
- **Options:** In case of 'Greeting', you can enter the text. It will be shown on the 'LISY-Desktop'. In case of 'release the floors' and 'Priority Travel', if you double click on the option box, it will open a window to select or edit the floors for the template. (See Picture 42). The only difference

is, in case of 'Priority Travel' first a command to the LiSA-Controller to change the operation mode to the 'Priority Travel' mode, then enables the COP buttons on the 'LISY-Desktop' and sends 'Call masks' to the 'LiSA-Controller'.

Floor	Selected	Floor	Selected	Floor	Selected	Floor	Selected	Floor	Selected	Floor	Selected
Floor 1	Yes	Floor 9	No	Floor 17	No	Floor 25	No	Floor 33	No	Floor 41	No
Floor 2	Yes	Floor 10	No	Floor 18	No	Floor 26	No	Floor 34	No	Floor 42	No
Floor 3	Yes	Floor 11	No	Floor 19	No	Floor 27	No	Floor 35	No	Floor 43	No
Floor 4	Yes	Floor 12	No	Floor 20	No	Floor 28	No	Floor 36	No	Floor 44	No
Floor 5	Yes	Floor 13	No	Floor 21	No	Floor 29	No	Floor 37	No	Floor 45	No
Floor 6	Yes	Floor 14	No	Floor 22	No	Floor 30	No	Floor 38	No	Floor 46	No
Floor 7	Yes	Floor 15	No	Floor 23	No	Floor 31	No	Floor 39	No	Floor 47	No
Floor 8	Yes	Floor 16	No	Floor 24	No	Floor 32	No	Floor 40	No	Floor 48	No

Picture 42 - Select Floors

- **Delete:** To remove selected template (On the list).
- **Save:** To save the changes and close.
- **Cancel:** To discard the changes and close.
- **Enrollment:** To define new Fingerprint templates. Normally this button is disabled and only will be enabled if LISY finds a fingerprint scanner is connected. After clicking on this button, you see a window like Picture 43.



Picture 43 - fingerprint Enrollment

To save a new fingerprint template, click on 'Start' button. The scanner will go to the 'Enrollment' mode. Put your finger on the scanner and see the 'Enrollment hint text', when it changes release your finger and put the same finger again on the scanner (if it is necessary). Normally you need to put your finger 4 times on the scanner to collect the features of fingerprint. After collecting the features successfully, the 'Save' button will be enabled and you are able to save the template as a file on the local storage. You can put the desired name on the 'File Name' box unless LISY will save the template with the current date and time as file name.

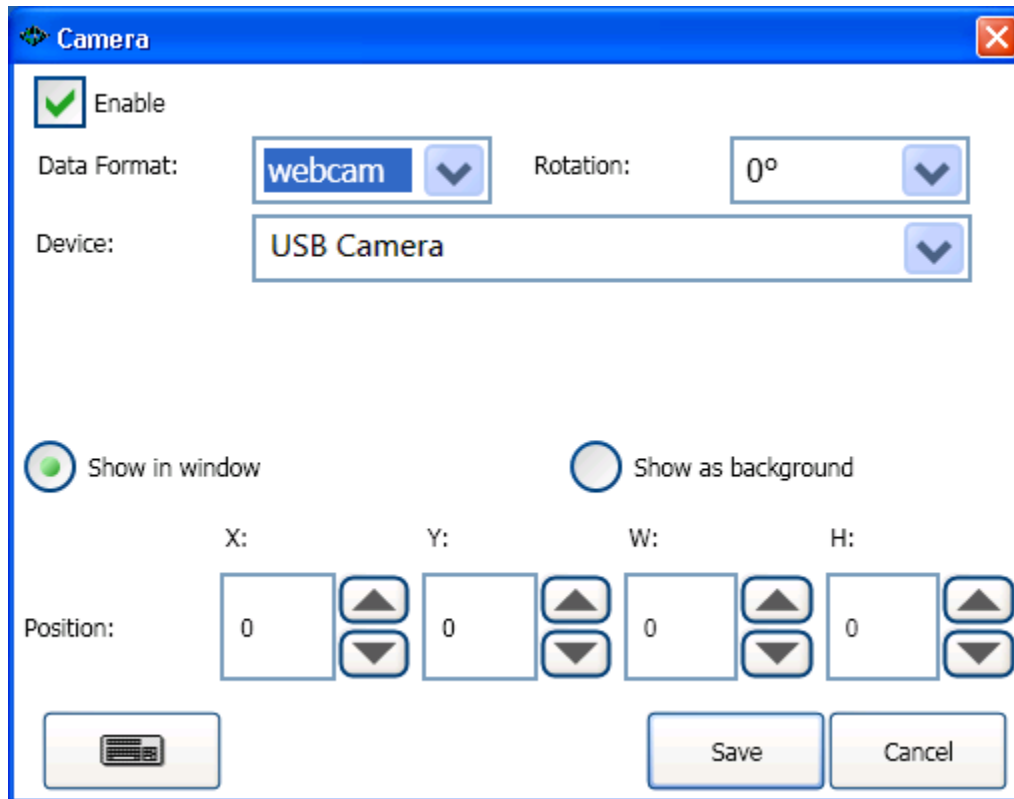
In during enrollment, you can stop the capturing the fingerprint (and start it again if it is necessary). In this case LISY will reset the counter of capturing and remove the captured templates until now. If you click on the 'Close' button, the window will close and discard all the templates in the current session.

Camera



To control webcam and IP cameras, to show the live images on the LISY-Desktop.

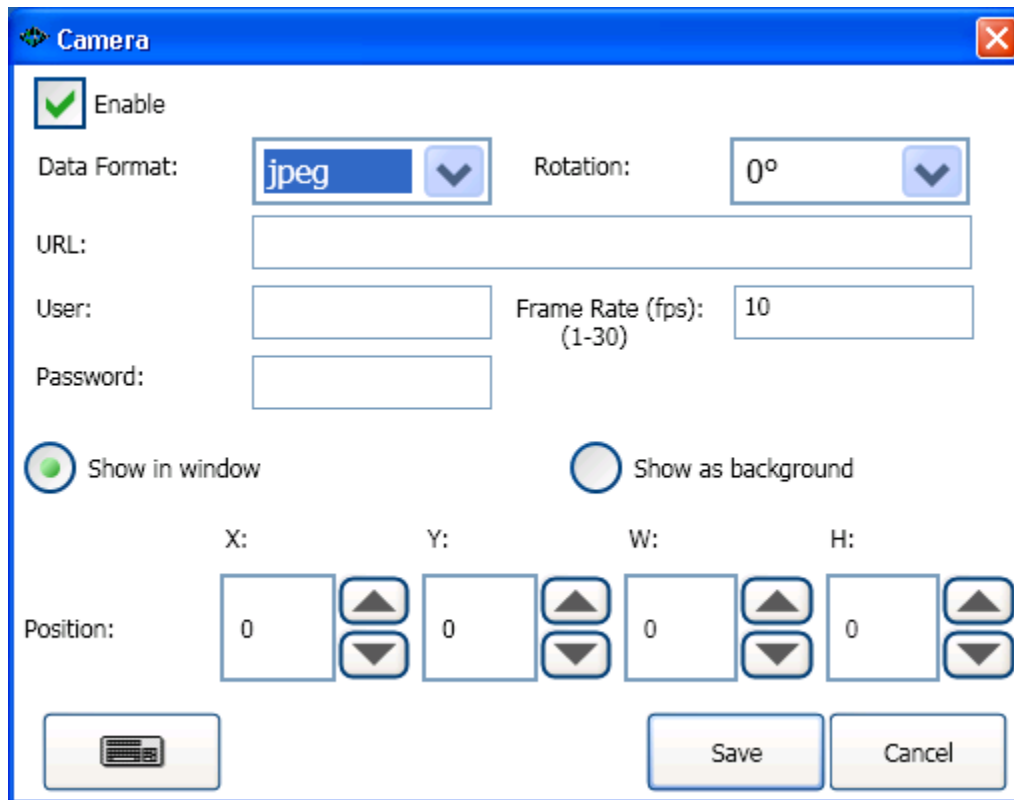
Local Webcam:



Picture 44 - Camera, Local Webcam

Show as background: if the Compute has an external USB (or internal) Webcam, you are able to show the streams from Webcam as background.

JPEG Format:



Camera

Enable

Data Format: Rotation:

URL:

User: Frame Rate (fps):
(1-30)

Password:

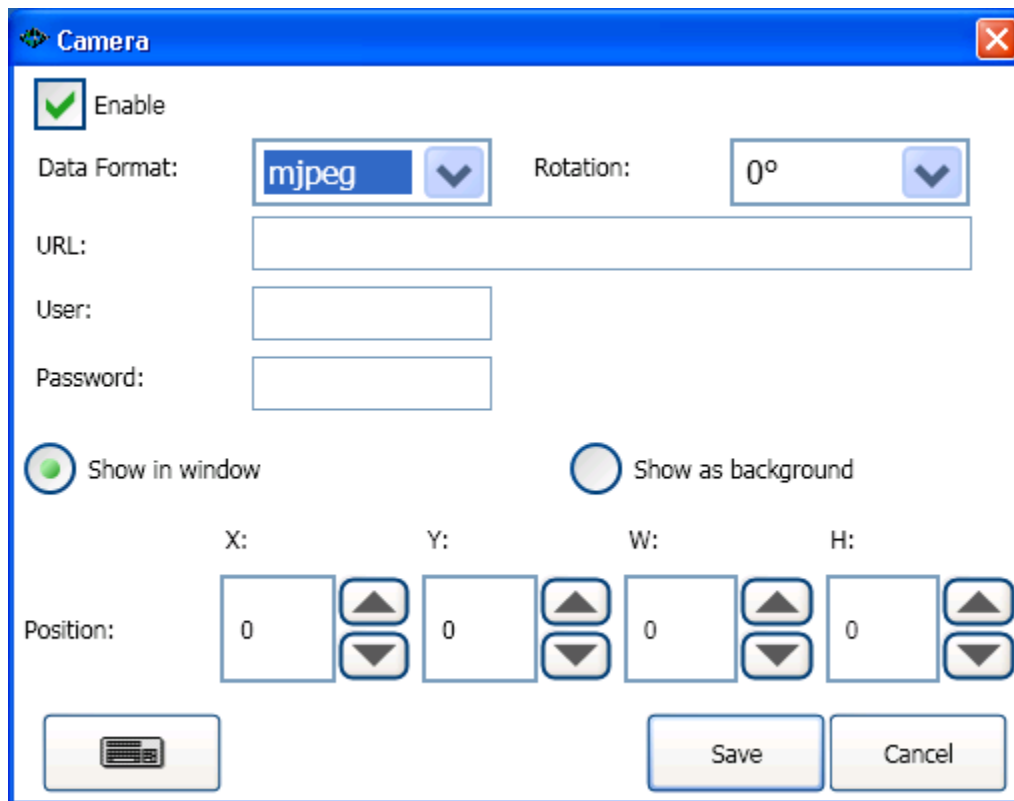
Show in window Show as background

Position: X: Y: W: H:

Picture 45 - Camera, IP Camera, JPEG Format

MJPEG Format:

Motion JPEG is a video format in which each video frame or interlaced field of a digital video sequence is compressed separately as a JPEG image. (en.Wikipedia.org)



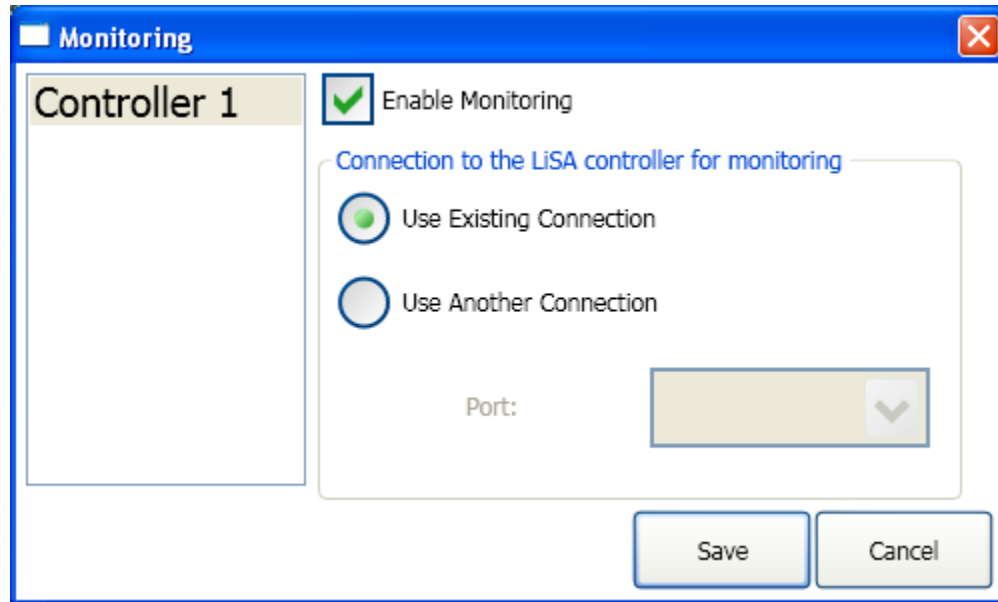
Picture 46 - Camera, IP Camera, MJPEG Format

Monitoring



To edit the parameters to enable/disable remote monitoring.

See Picture 47



Picture 47 - Monitoring Menu Item

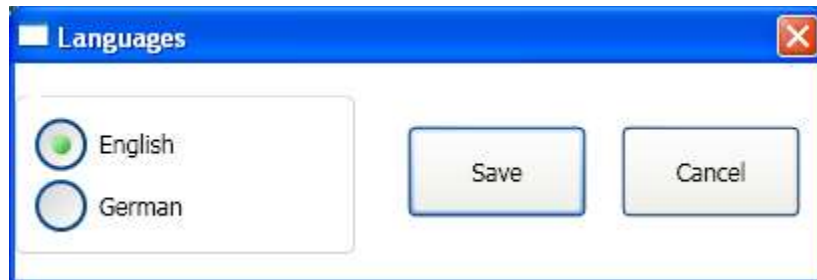
To allow using LISY as an interface between the 'LiSA-Controller' and the 'LiSA-Monitoring-System', you should enable monitoring.

- **List of controllers:** For each controller you can change the monitoring properties, separately.
- **Enable Monitoring:** To enable/disable the monitoring.
- **Use Existing Connection:** if you select this option, LISY will try to send and get data using the existing port, which is already defined at the 'Controllers' menu item. (See Controllers).
- **Use another Connection:** In this case LISY tries to communicate with the controller using the specific port below.
- **Port:** you must select a port to communicate with the controller. This port **must not** be the same port as controller port which is defined at the 'Controllers' menu item. (See Controllers).
- **Save:** To save the changes and close.
- **Cancel:** To discard the changes and close.

Languages



To change the interface language.
See Picture 48



Picture 48 - Languages Menu Item

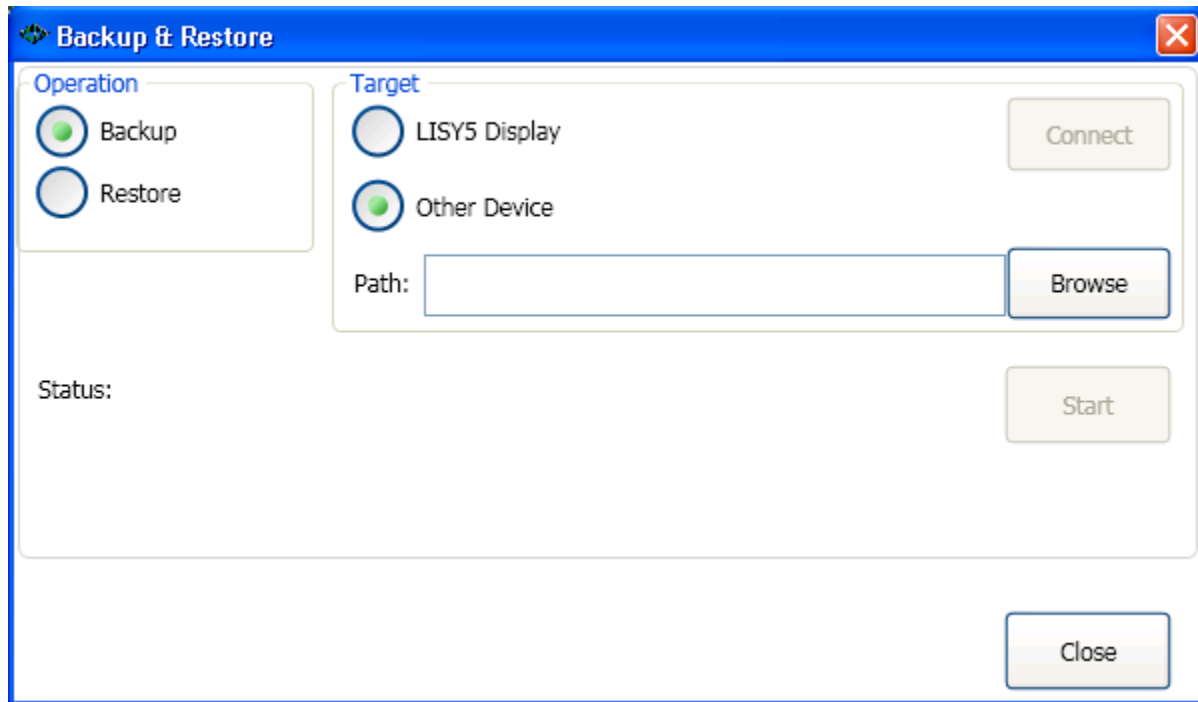
You can change the language between 'English' and 'German', by clicking on the desired language and then save. Immediately you will see the menu items and other texts in the new language, which you already have chosen.

Also we are able to add the other languages on demand. If you need to add a new language to the LISY system, you can contact with the [Schneider Steuerungstechnik GmbH](#).

Backup – Restore



To make backup from configuration or restore that from backup.
See Picture 49.



Picture 49 - Backup & Restore Menu Item

To avoid losing the configuration, you can make a backup or restore configuration from a backup.

- **Backup:** Choose this option, if you want to make backup.
- **Restore:** Choose this option, if you want to restore a saved configuration again.
- **Target:** You should select the target of operation:
 - **LISY5 Display:** Select this option, if you want to send/get the configuration to the 'LISY5' TFT display. In this case you must connect the 'LISY5' via a USB cable to the computer. You must also have 'MS-ActiveSync' program installed on your computer that runs LISY now.
(For Windows Vista and Windows 7, you need another program, named 'Windows Mobile Device Center').
After that click 'Connect'. After connection the 'Start' button will be activated.
 - **Other Device:** Select this option if you want to do backup to (restore from) local hard drive, SD cards, USB Stickers, Network drives, and...
 - **Path:** To select the path of backup/restore, if you selected 'Other Device'.

- **Start:** To start the operation. It maybe takes some Minutes time. Please wait.
- **Status:** Here you see the status of operation.
- **Close:** After the operation is finished, by clicking on this button, you can close the window.



Info

To show information about the LISY system and enter/edit activation code.

See Picture 50

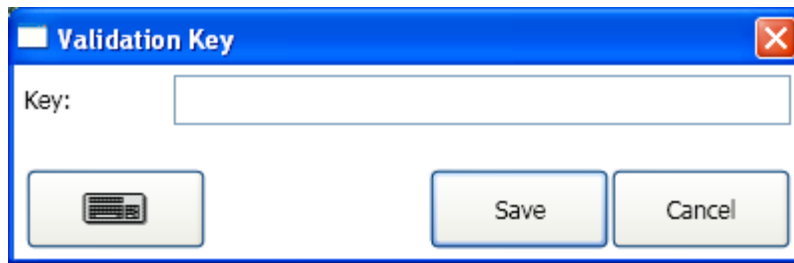


Picture 50 - Info Menu Item

On this page you see the version of LISY (Build Date), contact address and telephone numbers, email address, and...

To activate each function of LISY (Display, Emergency System, Attendant System), you need to have a valid key code. You get this key from the 'Schneider Steuerungstechnik GmbH' depending to your purchased product. During installation you can enter the code unless you must enter here the code to able using the LISY. Also you can change the key, if you have already a key for a special product and you want to allow using the other parts of LISY. After click on the button you will see the following window. (See Picture 51)





Picture 51 - Enter Validation Key

Enter the key on the box and press save to save and use the validation key.

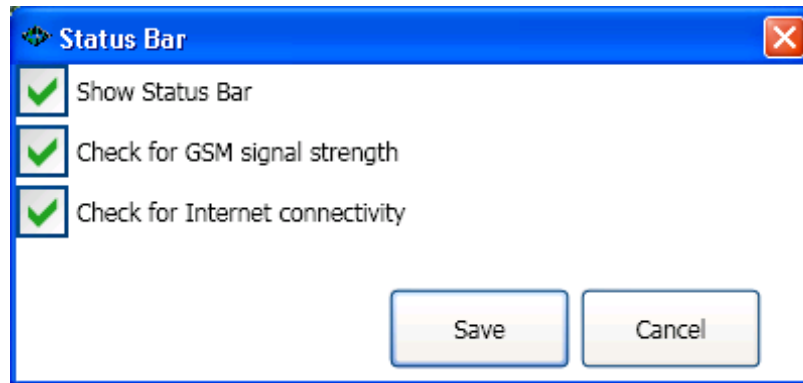
The validation key is not case sensitive, that means, there is no difference between capital and small letters.

Status



To enable/disable status bar.


See Picture 52



Picture 52 - Status Menu Item

- **Show Status Bar:** To show/hide the status bar on the 'LISY-Desktop'.
- **Check for GSM signal strength:** If you have a GSM Modem connected to the computer and you are using that for Emergency System (Attendant System), you can see the strength of GSM signal. On the status bar container on the 'LISY-Desktop'. You will see one of these symbols.



- **Check for Internet connectivity:** if internet is not connected you will see the  sign on the 'LISY-Desktop'.

Extras

There are some components to show on the LISY-Desktop those are not maybe usable for the all users, because they need special hardware or special configurations.

Current Height



Current Height

Show

Offset (mm):

Prefix:

Suffix:

Font:

Alignment: ▼


Position:

X: ▲ ▼

Y: ▲ ▼

W: ▲ ▼

H: ▲ ▼



Picture 53 - Current Height

Lift View

Lift View [Close]

Show

Cabin Height (mm):

Cabin Color:

Position:

X: [Up] [Down]

Y: [Up] [Down]

W: [Up] [Down]

H: [Up] [Down]

[Keyboard Icon]

[Save] [Cancel]

Picture 54 - Lift View

Cabin Load



Cabin Load
✕

Show

Minimum:

Min. Label:

Minor Tick Step:

Default Tick Color:

Maximum:

Max. Label:

Major Tick Step:

Indicator Color:

Ranges

Weight Sensor

Active Port: ▾

Min. Value:

Max. Value:

Overload Value:

Empty Value:

Current Value:

Position:

X:

Y:

W:

H:

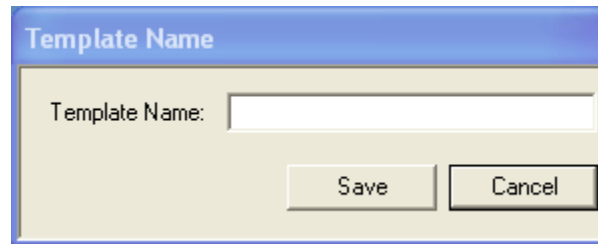
Picture 55 – Cabin Load

Light Control



Save as Template

You are able to save the current configuration as template and load that in the 'Templates-Menu Item' (See Templates). To do that, choose 'Save As Template' in drop-down menu. A window will open (See Picture 56)



Picture 56 - Save as template

Enter a name for your template and click on the 'Save' button. LISY will save the current configuration as a template. We recommended choosing a name with the original size of display. For example if you have a display with the resolution 1280x1024, put something like "Template 01 – 1280x1024".

Show 'TFT Display' limit border

The LISY5's resolution is 640x480 pixels. To activate a guide line to show you this limits, you can use this option. Using this guide line, you can drag and drop the components, those you want to show in LISY5, inside the lines. You can send the configuration using "Backup – Restore" to the LISY5 Display. You should know that LISY doesn't support all the components and will show defined components.

Show desktop

To minimize the LISY and show the 'Windows Desktop'.

Run the LiSA-PC Program

To minimize the LISY and run the LiSA-PC program to configure the parameters of LiSA controller or monitor the LiSA controller.

Exit Program

To close the LISY program.

LISY Emergency & Attendant Systems

Main Menu

Sound card



To manage the sound cards for emergency call.
See Picture 57

Sound Cards

Enable Sound Redirection

Local

Mic.: Realtek HD Audio Input

Spk.: Realtek HD Audio output

Machine Room

Mic.: Select Device

Spk.: Select Device

Cabin

Mic.: Select Device

Spk.: Select Device

Save Cancel

Picture 57 - Sound Cards Menu Item

If you have more than one station to talk with the service center, you must have for each station one sound card installed on your computer.

In the Sound Cards menu Item you can select for each station the correct sound card.

Positions



To add, remove or edit positions using “Absolute Encoder”.

See Picture 58

Positions

Controllers: ▼

Positions:

Floor	Position (mm)	Travel Counter	Steps Counter
1	13000	0	0
2	16000	0	0
3	19000	0	0
4	22000	0	0
5	25000	0	0
6	28000	0	0
7	31000	1	0
8	34000	0	0

Position

Absolute
Current Position:

Relative
Zero Point:

Level Position:

Add

Remove

Total Travels:

Save Cancel

Picture 58 - Positions Menu Item

If you are using “Absolute encoder” for the positioning, you should configure the floor levels in this window.

If you have more than one controller, select the controller from the list box then you can manage the positions.

To add a position, select either “Absolute” to use the current data from the reader or select “Relative” to enter the floor height manually. In this case you should have a reference point and the Floor’s height. After that press “Add” button to insert the data to the table. The table will be automatically sorted using the positions. Also you can select a floor from the table and remove that by “Remove” button.

In the table you can see the floor heights, travel counter for each floor and also step counter for each floor. The total amount of travels will be shown on the “Total Travels”.

- **Save:** To save the changes and close.
- **Cancel:** To discard the changes and close.

Connections



To configure connections for Emergency System and Attendant System.
See Picture 59

Picture 59 - Connections Menu Item

LISY can communicate with the “Service Center” using four different Medias, Skype, TCP/IP, GSM Modem and Analog Modem. For each Media you can configure the parameters.

- Skype: To use Skype, you must install the Skype program on the computer that LISY runs on that also the Service Center must have Skype program installed on the computer.
 - “Allow sending Video”: if you check this box, in case of Service center request, LISY captures Video from the local Webcam and sends to the Service Center.

- “In case of Emergency Call, Use Data Connection”: if you check this box, in case of emergency call, LISY makes connection to the Service Center using Data connection, and sends the data and waits for voice connection from the service center.
- TCP/IP:
 - “Check for connection Requests”: in case of using UMTS router to making connection to the Internet, LISY can check if any Service center has sent connection request. If LISY detects a request from Service Center, tries to make TCP/IP connection to the Service Center.
- GSM:
 - Select Serial port that is connected to the GSM Modem.
 - “In case of Emergency Call, Use Data Connection”: if you check this box, in case of emergency call, LISY makes connection to the Service Center using Data connection, and sends the data and waits for voice connection from the service center.
- Modem:
 - Select Serial Port for the Modem.
 - Switch to the Telephone Set:

Internet: LISY is able to make connection to the Internet using “Surf Stick” or “Dialup Connection”.

If you select “Surf Stick”, you must set the following parameters:

- Connection Method:
 - Always Connected: LISY monitors the connection to the Internet and if that is broken tries to make the connection again.
 - Connect if Necessary: LISY makes the connection to the Internet only when needs the Internet connection.
- Device Name: You must select the hardware is already installed on your computer for the Internet Connection.
- Device Port: The Serial port to communicate with the Surf Stick.
- Device PIN Code: the PIN code of the SIM Card that already installed in the stick.
- Device Dial No. and APN: you should get this information from your SIM card Provider.

Always Dial the Default Connection: in this case you must create a dialup connection in the windows “Control Panel” and select that as device also you must select the modem port from the Device Port.

- **Save:** To save the changes and close.
- **Cancel:** To discard the changes and close.

Service Centers



To configure service centers for the Emergency and Attendant System.
See Picture 60

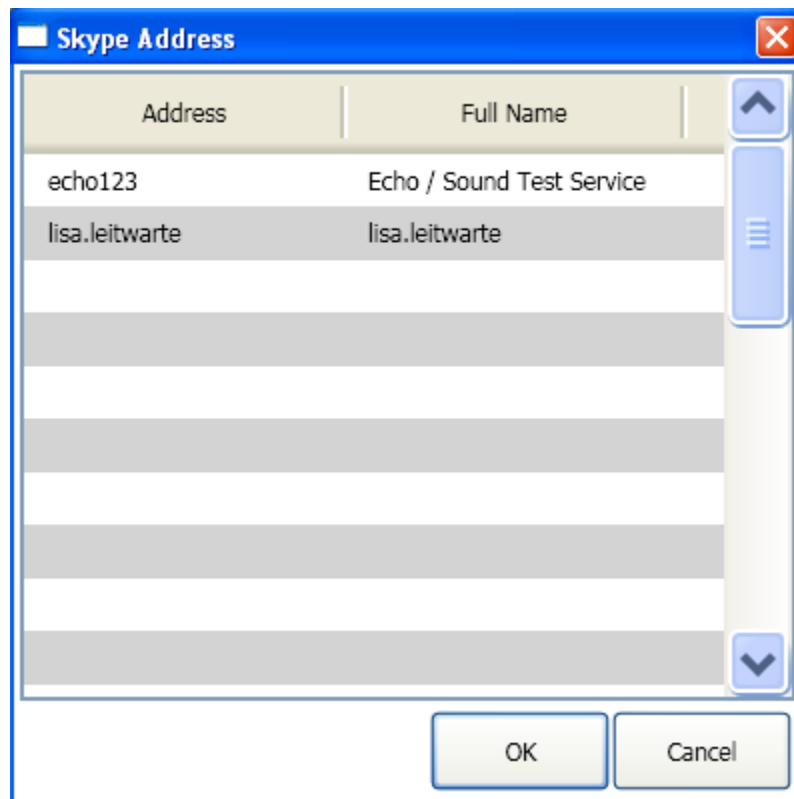
Name	Connection T	Address	Time Interva	Available	EC	AC
SC 1	TCP/IP	lisa.leitwarte	Always	Conditional	<input checked="" type="checkbox"/>	<input checked="" type="checkbox"/>
SC 2	TCP/IP	10.11.115.196	Always	Conditional	<input checked="" type="checkbox"/>	<input checked="" type="checkbox"/>
SC 3	Skype	lisa.leitwarte	Always	Conditional	<input checked="" type="checkbox"/>	<input checked="" type="checkbox"/>
SC 4	GSM	080769187222	Always	Conditional	<input checked="" type="checkbox"/>	<input checked="" type="checkbox"/>

Buttons: [Modem Icon] [Save] [Cancel]

Picture 60 - Service Centers Menu Item

LISY needs the Service Centers to send them Emergency Call or any other information. LISY can Have Maximum four Service Centers. It will try to catch the Service centers from top to bottom of list and makes this procedure two times. That means in the worst case LISY tries eight times to send information to the Service Center.

- **Connection Type:** you can select the type of Media to communicate with the Service Center. It can be TCP/IP, Skype, GSM or Modem.
- **Address:** this field has different meaning depends to the Connection Type.
 - TCP/IP: you can put the IP Address if you are in the same network with the Service Center. If you are using the Internet and the Service Center is not in the same Network, you must enter the logical name of the Service Center.
 - Skype: enter the Skype Name of the Service Center, or double click on this field to open the list of the contacts in the Skype Client, and then select the correct Name for the Service Center and press OK. See Picture 61.



Picture 61 - Select Skype Name from the list

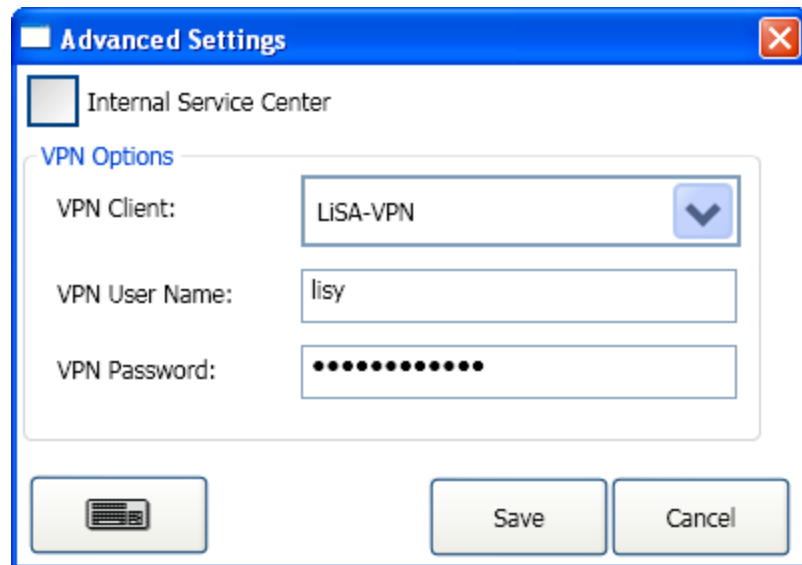
- GSM modem: in this case you must enter the telephone number of the Service center completely (with the area code).
- Modem: enter the Service Center's phone number. If service Center has different area code you must enter the complete telephone number. If your line needs to dial a code before dialing, you must put that code and separate that with a comma. For example 0,08945157895
- **Time Interval:** Some of the Service Centers only in a part of week and day are available. In this case you can define the available times in the week by double click on the Time Interval field. (See Picture 62). For each day enter the start and end time in format of "HH:MM" for example "21:20".

Weekdays	From	To
Monday	HH:MM	HH:MM
Tuesday		
Wednesday		
Thursday		
Friday		
Saturday		
Sunday		

Buttons: [Keyboard Icon] [Save] [Cancel]

Picture 62 - Service Center's Available Times

- **Available:** you can select "Conditional" or "Always". Conditional means, if LISY already informed a Service Center then ignore that. In case of "Always", LISY tries to inform the Service Center always although already informed at least one Service Center.
- **EC:** Check if Service Center is an "Emergency Call" Service Center.
- **AC:** Check if Service Center is for "Lift Attendant".
- **Advanced Settings:** in case of "TCP/IP" you can see a button at the end of row. By clicking on that you will see the following window. See Picture 63.
If you are using the IP address of an Internal Service Center, Check the box.
If your Service Center is online the Internet you must configure a VPN Client in the windows system and select that from the list box. Also you need an Id and a Password from the VPN Server of the Service Center and you must enter them in the following Window.
- **Save:** To save the changes and close.
- **Cancel:** To discard the changes and close.



Picture 63 - Advanced Settings

Emergency Call



To edit parameters for Emergency System.
See Picture 64

Picture 64 - Emergency Call Menu Item

- **Controllers:** To select the current controller. For each controller LISY can have different settings.
- **Alarm, If at least 3 Sec. pressed:** to avoid misusing the alarm button, if check that, the button must at least pressed 3 second by the user.
- **Prevent misuse alarm:** if check the box, LISY checks if the elevator runs correctly or not, the doors are open or not and ... then if the situation is an abnormal situation then accept the emergency call and tries to inform the Service Center.
- **Routine Test:** To sure the system is working fine, you can set Routine test for the emergency call. In this case you must check the box then schedule an appointment for example every 1 Day at 3:00. LISY will send at the scheduled time a packet to the Service Center. The Service center can check if the packet from LISY comes. If not, it is something wrong in LISY system and somebody must check the LISY if it works properly. You can test also the Routine call by clicking on "Run it now".

Lift Attendant



To edit parameters for the Attendant System.
See Picture 65

LISY Attendant system monitoring the operation of the elevator for the following things:

- **Cabin Light:** Checks if the cabin light is working properly.
- **Door Faults:** Checks if the “Door Open” and “Door Close” Limit switches working properly and also the doors are closed during the cabin travel.
- **Steps:** Checks if the cabin stops at the floors with a step.
- **Maintenance:** Checks total travel counter or interval between two Maintenance-Services.
- **Battery Status:** Checks the status of the battery. (If exists)
- **Routine Test:** To be sure the system is working properly.

LISY Attendant System need input signals from the controller to monitor the operation. These signals should be connected to the LISY-PC interface board. The Signals are:

- Current position of the cabin from the absolute encoder board
- Door-Open Limit Switch
- Door-Close Limit Switch
- Cabin Light Sensor
- Maintenance Signal, to check if the elevator is running in the maintenance situation.

To do these functions you should set the following parameters for each controller.

- **Maintenance Interval**
 - **Duration:** Interval between two Maintenance-Services.
 - **End Date:** the date of next service. LISY send five days before the date a message to the Service Center to warn about the interval. It sends also another message to the Service Center at the end date.
 - **Max. Travel in the interval:** LISY sends a warning message when the total travel counter exceeds 90% of the Max. Counter. It sends also another message when the Max. Counter exceeded.
 - **Maintenance Reaction:** you can set the reaction for the end of Interval Maintenance or Total travel counter. The reactions are “Nothing” or “Out of Order”. If you set the reaction to “Out of Order”, LISY sets an Output to the Controller to make that out of service when the end date of maintenance or Max. Travel counter exceeded.
- **Step**
 - **Max. Step Frequency:** LISY has two counters for each floor; one of them is “Total counter” that means the number of travel to the floor, the other one is “Step counter”

that means how many travels had step. If the relation of these two counters exceeds from the maximum step frequency, then LISY sends message to the Service Center.

- **Reporting step amount:** with this parameter you define how much difference is should be count as step.
- **Further**
 - **Zone Length:** To define the length of the stopping zone.
 - **Cabin Light Error Counter:** LISY sends message to the Service Center if cabin travels without the light. This counter shows how many travels in sequence should count as “Cabin Light error”.
- **Routine Test:** To sure the system is working fine, you can set Routine test for the Attendant System. In this case you must check the box then schedule an appointment for example every 1 Day at 3:00. LISY will send at the scheduled time a packet to the Service Center. The Service center can check if the packet from LISY comes. If not, it is something wrong in LISY system and somebody must check the LISY if it works properly. You can test also the Routine call by clicking on “Run it now”.
- **Reset Interval And Counter:** after Maintenance, the service personnel must click this button to reset the counters and set a new date for the next service.
- **Save:** To save the changes and close.
- **Cancel:** To discard the changes and close.

Lift Attendant

Controller 1

Maintenance interval

Duration: 120 Day(s)

End Date: 05.12.2012

Max. travels in maintenance interval: 30000

Current Travel Counter: 0

Maintenance Reaction: Nothing

Step

Maximum step frequency (%): 10

Reporting step amount (±) (mm): 20

Further

Zone Length (±) (mm): 150

Cabin Light Error Counter: 1

Routin Test

Enable Routine Test

Do Task Every 7 Day(s) At: Hour: 0 Min.: 0

Run it now

Reset Interval & Counters Save Cancel

Picture 65 - Lift Attendant Menu Item